

Product datasheet for **AP23885PU-N**

MAK10 (NAA35) (N-term) Rabbit Polyclonal Antibody

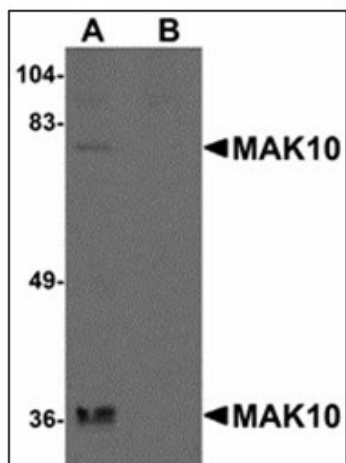
Product data:

Product Type:	Primary Antibodies
Applications:	ELISA, IHC, WB
Recommended Dilution:	ELISA. Immunohistochemistry on Paraffin Sections: 10 µg/ml. Western Blot: 1 - 2 µg/ml.
Reactivity:	Human, Mouse, Rat
Host:	Rabbit
Clonality:	Polyclonal
Immunogen:	Synthetic peptide - KLH conjugated
Specificity:	This antibody reacts to the N-term of MAK10.
Formulation:	PBS containing 0.02% sodium azide as preservative State: Purified State: Liquid purified Ig fraction
Concentration:	lot specific
Purification:	Immunoaffinity Chromatography
Conjugation:	Unconjugated
Storage:	Store the antibody undiluted at 2-8°C.
Stability:	Shelf life: one year from despatch.
Gene Name:	N(alpha)-acetyltransferase 35, NatC auxiliary subunit
Database Link:	Entrez Gene 64472 Rat Entrez Gene 78689 Mouse Entrez Gene 60560 Human Q5VZE5
Synonyms:	EGAP

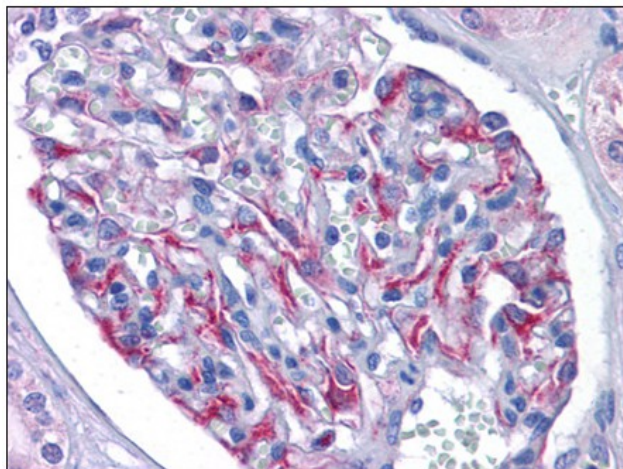


[View online »](#)

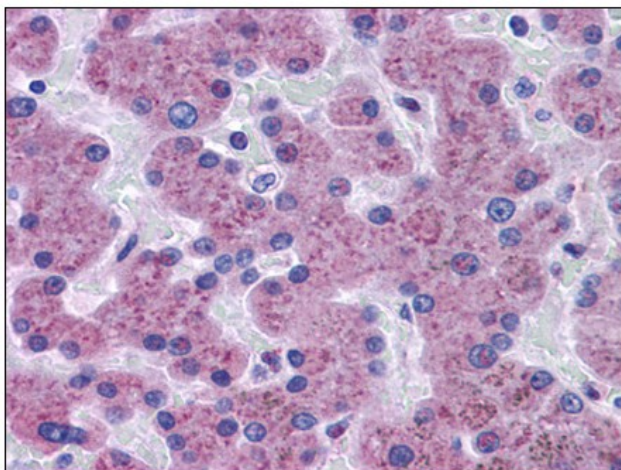
Product images:



Western blot analysis of MAK10 in rat heart tissue lysate with MAK10 antibody at 1 ug/ml in the (A) absence and (B) presence of blocking peptide.



Human Kidney: Formalin-Fixed, Paraffin-Embedded (FFPE)



Human Liver: Formalin-Fixed, Paraffin-Embedded (FFPE)