

## Product datasheet for **AP23882PU-N**

### **SYPL2 (C-term) Rabbit Polyclonal Antibody**

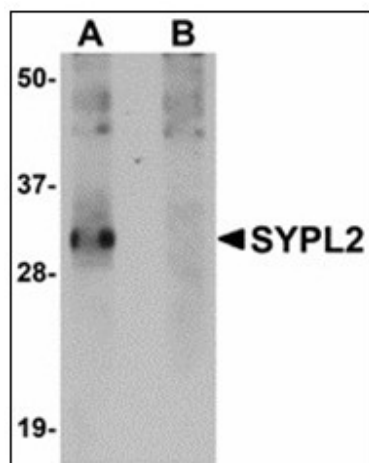
#### **Product data:**

Product Type:	Primary Antibodies
Applications:	ELISA, IHC, WB
Recommended Dilution:	<b>ELISA.</b> <b>Immunohistochemistry on Paraffin Sections:</b> 5 µg/ml. <b>Western Blot:</b> 1 - 2 µg/ml.
Reactivity:	Human, Mouse, Rat
Host:	Rabbit
Clonality:	Polyclonal
Immunogen:	Synthetic peptide - KLH conjugated
Specificity:	This antibody reacts to the C-term of SYPL2.
Formulation:	PBS containing 0.02% sodium azide as preservative State: Purified State: Liquid purified Ig fraction
Concentration:	lot specific
Purification:	Immunoaffinity Chromatography
Conjugation:	Unconjugated
Storage:	Store the antibody undiluted at 2-8°C.
Stability:	Shelf life: one year from despatch.
Gene Name:	synaptophysin like 2
Database Link:	<a href="#">Entrez Gene 17306 Mouse</a> <a href="#">Entrez Gene 362018 Rat</a> <a href="#">Entrez Gene 284612 Human</a> <a href="#">Q5VXT5</a>
Synonyms:	Synaptophysin-like protein 2
Protein Families:	Transmembrane

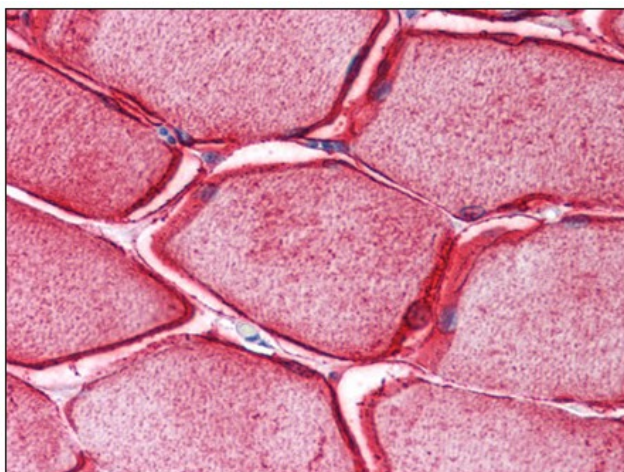


[View online »](#)

## Product images:



Western blot analysis of SYPL2 in human spleen tissue lysate with SYPL2 antibody at 1 ug/ml in (A) the absence and (B) the presence of blocking peptide.



Human Skeletal Muscle: Formalin-Fixed, Paraffin-Embedded (FFPE)