

Product datasheet for **AP23878PU-N**

KLHL15 (C-term) Rabbit Polyclonal Antibody

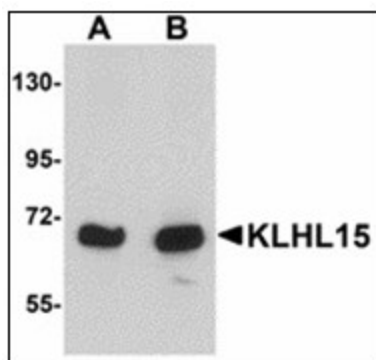
Product data:

Product Type:	Primary Antibodies
Applications:	ELISA, IF, IHC, WB
Recommended Dilution:	ELISA. Immunocytochemistry. Immunohistochemistry on Paraffin Sections: 5 µg/ml. Western Blot: 1 - 2 µg/ml.
Reactivity:	Human, Mouse, Rat
Host:	Rabbit
Clonality:	Polyclonal
Immunogen:	Synthetic peptide - KLH conjugated
Specificity:	This antibody reacts to the C-term of KLHL15.
Formulation:	PBS containing 0.02% sodium azide as preservative State: Purified State: Liquid purified Ig fraction
Concentration:	lot specific
Purification:	Immunoaffinity Chromatography
Conjugation:	Unconjugated
Storage:	Store the antibody undiluted at 2-8°C.
Stability:	Shelf life: one year from despatch.
Gene Name:	kelch like family member 15
Database Link:	Entrez Gene 236904 Mouse Entrez Gene 314111 Rat Entrez Gene 80311 Human Q96M94
Synonyms:	Kelch-like protein 15, KIAA1677

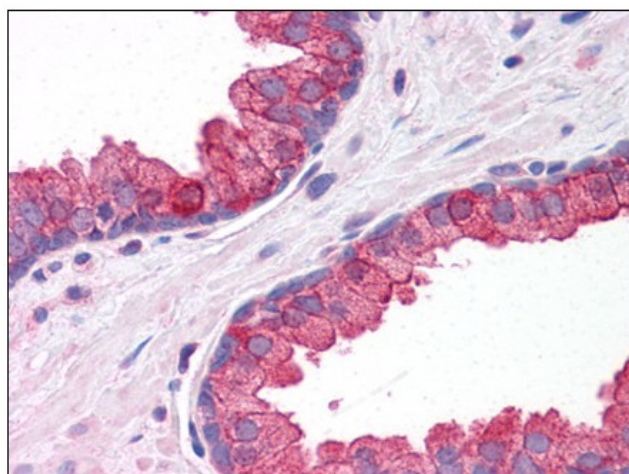


[View online »](#)

Product images:



Western blot analysis of KLHL15 in HeLa cell lysate with KLHL15 antibody at (A) 1 and (B) 2 ug/ml.



Human Prostate: Formalin-Fixed, Paraffin-Embedded (FFPE)