

Product datasheet for **AP23877PU-N**

AFAP1L2 (C-term) Rabbit Polyclonal Antibody

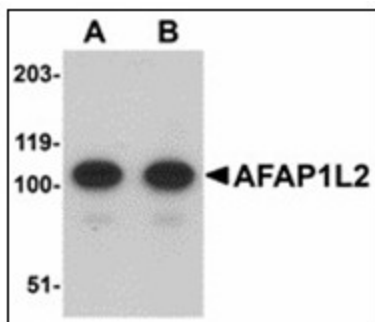
Product data:

Product Type:	Primary Antibodies
Applications:	ELISA, IHC, WB
Recommended Dilution:	ELISA. Immunohistochemistry on Paraffin Sections: 5 µg/ml. Western Blot: 1 - 2 µg/ml.
Reactivity:	Human, Mouse, Rat
Host:	Rabbit
Clonality:	Polyclonal
Immunogen:	Synthetic peptide - KLH conjugated
Specificity:	This antibody reacts to the C-term of AFAP1L2.
Formulation:	PBS containing 0.02% sodium azide as preservative State: Purified State: Liquid purified Ig fraction
Concentration:	lot specific
Purification:	Immunoaffinity Chromatography
Conjugation:	Unconjugated
Storage:	Store the antibody undiluted at 2-8°C.
Stability:	Shelf life: one year from despatch.
Gene Name:	actin filament associated protein 1 like 2
Database Link:	Entrez Gene 226250 Mouse Entrez Gene 292130 Rat Entrez Gene 84632 Human Q8N4X5
Synonyms:	AFAP1-like protein 2, KIAA1914, XB130

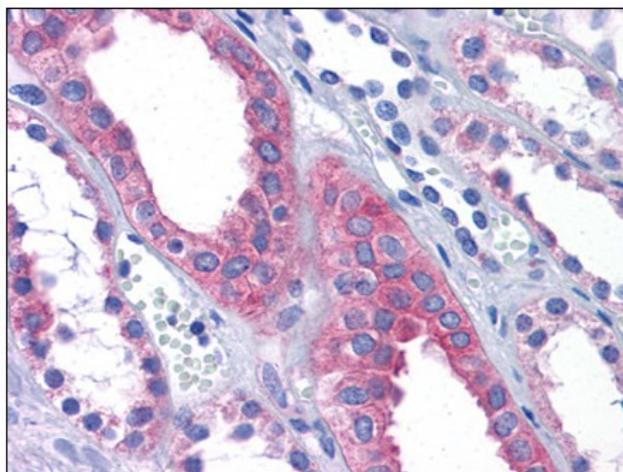


[View online »](#)

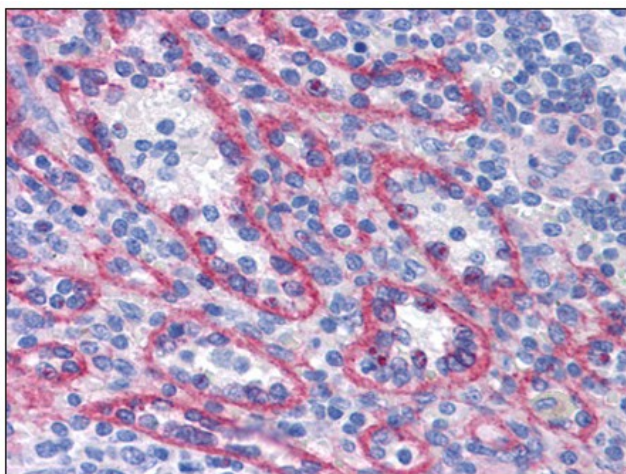
Product images:



Western blot analysis of AFAP1L2 in mouse liver tissue lysate with AFAP1L2 antibody at (A) 1 and (B) 2 ug/ml.



Human Kidney: Formalin-Fixed, Paraffin-Embedded (FFPE)



Human Spleen: Formalin-Fixed, Paraffin-Embedded (FFPE)