

Product datasheet for **AP23873PU-N**

SCF (KITLG) Rabbit Polyclonal Antibody

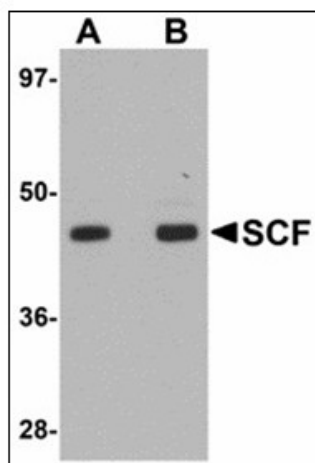
Product data:

Product Type:	Primary Antibodies
Applications:	ELISA, IHC, WB
Recommended Dilution:	ELISA. Immunohistochemistry on Paraffin Sections: 5 µg/ml. Western Blot: 1 - 2 µg/ml.
Reactivity:	Human, Mouse, Rat
Host:	Rabbit
Clonality:	Polyclonal
Immunogen:	Synthetic peptide - KLH conjugated
Specificity:	This antibody reacts to the internal region of KITLG.
Formulation:	PBS containing 0.02% sodium azide as preservative State: Purified State: Liquid purified Ig fraction
Concentration:	lot specific
Purification:	Immunoaffinity Chromatography
Conjugation:	Unconjugated
Storage:	Store the antibody undiluted at 2-8°C.
Stability:	Shelf life: one year from despatch.
Gene Name:	KIT ligand
Database Link:	Entrez Gene 60427 Rat Entrez Gene 4254 Human P21583
Synonyms:	KITL, Kit ligand, c-Kit ligand, Stem cell factor, Mast cell growth factor, MGF
Protein Families:	Druggable Genome, Transmembrane
Protein Pathways:	Cytokine-cytokine receptor interaction, Hematopoietic cell lineage, Melanogenesis, Pathways in cancer

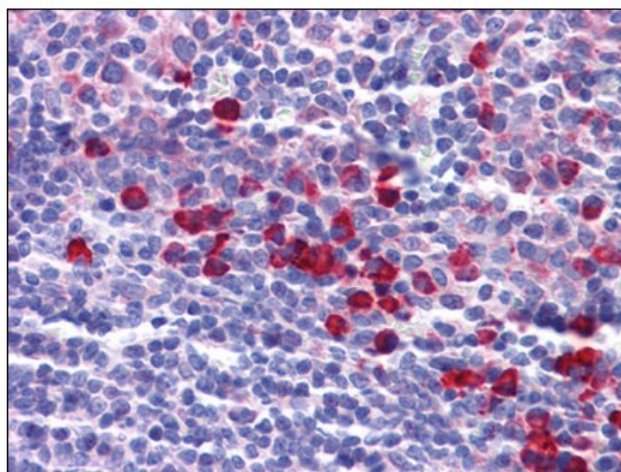


[View online »](#)

Product images:



Western blot analysis of SCF in rat brain tissue lysate with SCF antibody at (A) 1 and (B) 2 ug/ml.



Human Tonsil: Formalin-Fixed, Paraffin-Embedded (FFPE)