

Product datasheet for **AP23871PU-N**

MATN1 (C-term) Rabbit Polyclonal Antibody

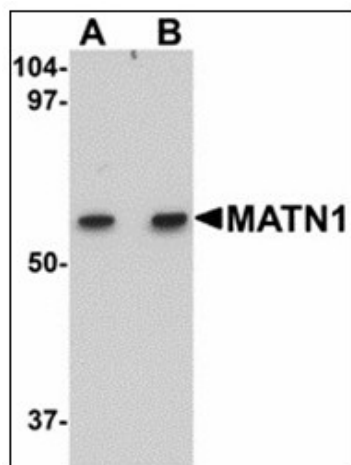
Product data:

Product Type:	Primary Antibodies
Applications:	ELISA, IHC, WB
Recommended Dilution:	ELISA. Immunohistochemistry on Paraffin Sections: 5 µg/ml. Western Blot: 1 - 2 µg/ml.
Reactivity:	Human, Mouse, Rat
Host:	Rabbit
Clonality:	Polyclonal
Immunogen:	Synthetic peptide - KLH conjugated. MATN1 / Matrilin 1 antibody was raised against a 13 amino acid peptide from near the carboxy terminus of human MATN1.
Specificity:	This antibody reacts to the C-term of MATN1.
Formulation:	PBS containing 0.02% sodium azide as preservative State: Purified State: Liquid purified Ig fraction
Concentration:	lot specific
Purification:	Immunoaffinity Chromatography
Conjugation:	Unconjugated
Storage:	Store the antibody undiluted at 2-8°C.
Stability:	Shelf life: one year from despatch.
Gene Name:	matrilin 1, cartilage matrix protein
Database Link:	Entrez Gene 17180 Mouse Entrez Gene 297894 Rat Entrez Gene 4146 Human P21941
Synonyms:	Cartilage matrix protein, MATN1, CMP, CRTM

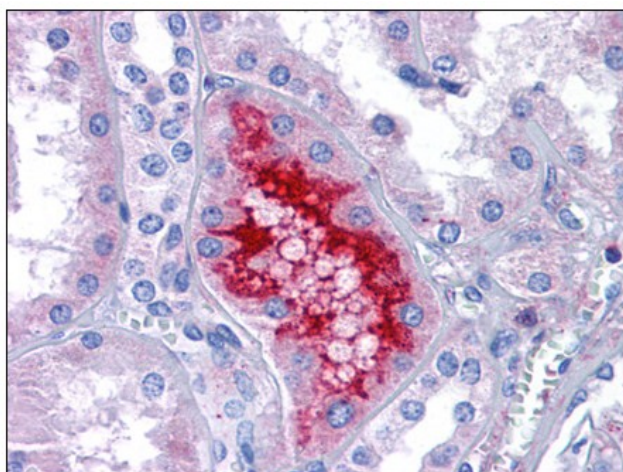


[View online »](#)

Product images:



Western blot analysis of MATN1 in rat liver tissue lysate with MATN1 antibody at (A) 1 and (B) 2 ug/ml.



Human Kidney: Formalin-Fixed, Paraffin-Embedded (FFPE)