

Product datasheet for **AP23870PU-N**

ZBED2 (N-term) Rabbit Polyclonal Antibody

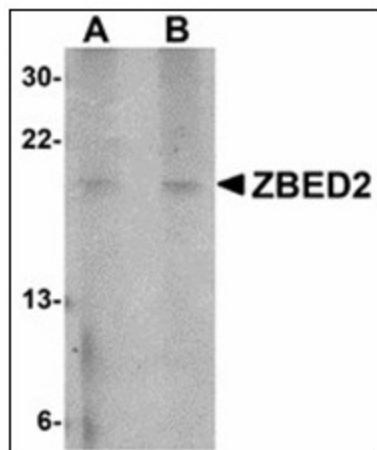
Product data:

Product Type:	Primary Antibodies
Applications:	ELISA, IF, IHC, WB
Recommended Dilution:	ELISA. Immunocytochemistry. Immunohistochemistry on Paraffin Sections: 5 µg/ml. Western Blot: 1 - 2 µg/ml.
Reactivity:	Human
Host:	Rabbit
Clonality:	Polyclonal
Immunogen:	Synthetic peptide - KLH conjugated
Specificity:	This antibody reacts to the N-term of ZBED2.
Formulation:	PBS containing 0.02% sodium azide as preservative State: Purified State: Liquid purified Ig fraction
Concentration:	lot specific
Purification:	Immunoaffinity Chromatography
Conjugation:	Unconjugated
Storage:	Store the antibody undiluted at 2-8°C.
Stability:	Shelf life: one year from despatch.
Gene Name:	zinc finger BED-type containing 2
Database Link:	Entrez Gene 79413 Human Q9BTP6
Synonyms:	MGC10796; OTTHUMP00000082693

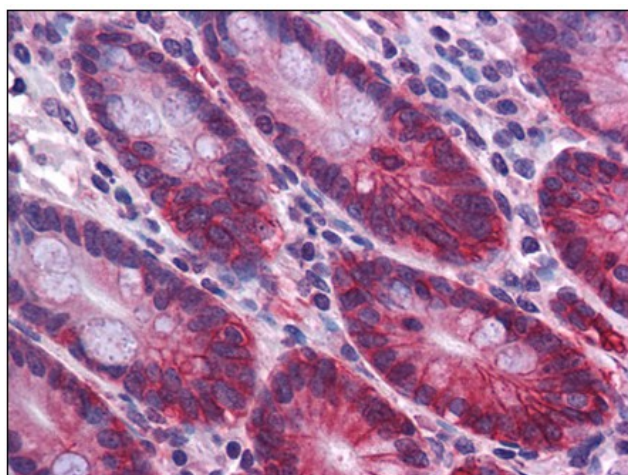


[View online »](#)

Product images:



Western blot analysis of ZBED2 in A549 cell lysate with ZBED2 antibody at (A) 1 and (B) 2 ug/ml.



Human Small Intestine: Formalin-Fixed, Paraffin-Embedded (FFPE)