

Product datasheet for **AP23869PU-N**

BORA (N-term) Rabbit Polyclonal Antibody

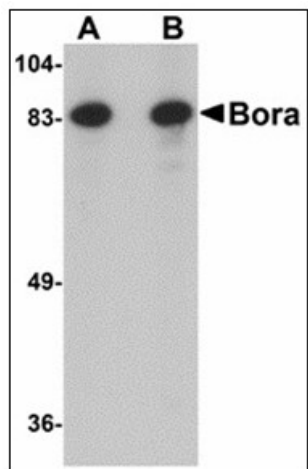
Product data:

Product Type:	Primary Antibodies
Applications:	ELISA, IHC, WB
Recommended Dilution:	ELISA. Immunohistochemistry on Paraffin Sections: 5 µg/ml. Western Blot: 1 - 2 µg/ml.
Reactivity:	Human, Mouse, Rat
Host:	Rabbit
Clonality:	Polyclonal
Immunogen:	Synthetic peptide - KLH conjugated
Specificity:	This antibody reacts to the N-term of C13orf34.
Formulation:	PBS containing 0.02% sodium azide as preservative State: Purified State: Liquid purified Ig fraction
Concentration:	lot specific
Purification:	Immunoaffinity Chromatography
Conjugation:	Unconjugated
Storage:	Store the antibody undiluted at 2-8°C.
Stability:	Shelf life: one year from despatch.
Gene Name:	bora, aurora kinase A activator
Database Link:	Entrez Gene 77744 Mouse Entrez Gene 306102 Rat Entrez Gene 79866 Human Q6PGQ7
Synonyms:	HsBora, BORA, C13orf34, FLJ22624
Protein Families:	Druggable Genome

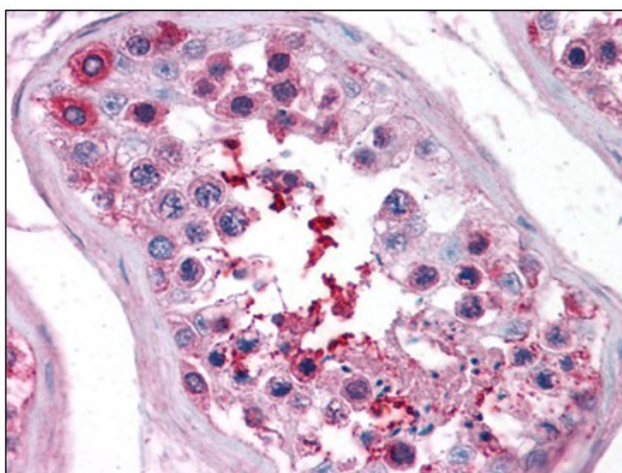


[View online »](#)

Product images:



Western blot analysis of Bora in Jurkat cell lysate with Bora antibody at (A) 1 and (B) 2 ug/ml.



Human Testis: Formalin-Fixed, Paraffin-Embedded (FFPE)