

Product datasheet for **AP23868PU-N**

KCTD15 (C-term) Rabbit Polyclonal Antibody

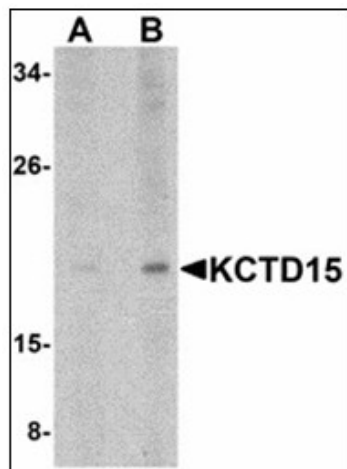
Product data:

Product Type:	Primary Antibodies
Applications:	ELISA, IHC, WB
Recommended Dilution:	ELISA. Immunohistochemistry on Paraffin Sections: 5 µg/ml. Western Blot: 0.5 - 1 µg/ml.
Reactivity:	Human, Mouse, Rat
Host:	Rabbit
Clonality:	Polyclonal
Immunogen:	Synthetic peptide - KLH conjugated
Specificity:	This antibody reacts to the C-term of KCTD15.
Formulation:	PBS containing 0.02% sodium azide as preservative State: Purified State: Liquid purified Ig fraction
Concentration:	lot specific
Purification:	Immunoaffinity Chromatography
Conjugation:	Unconjugated
Storage:	Store the antibody undiluted at 2-8°C. DO NOT FREEZE!
Stability:	Shelf life: one year from despatch.
Gene Name:	potassium channel tetramerization domain containing 15
Database Link:	Entrez Gene 233107 Mouse Entrez Gene 499129 Rat Entrez Gene 79047 Human Q96S11
Synonyms:	KCTD15, KCTD-15, BTB/POZ domain-containing protein KCTD15
Protein Families:	Ion Channels: Other

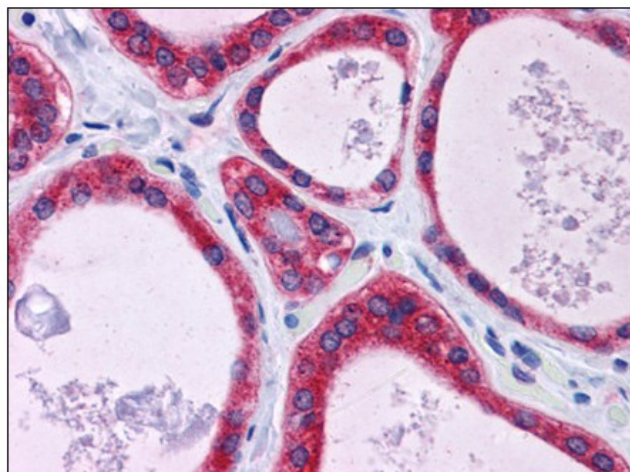


[View online »](#)

Product images:



Western blot analysis of KCTD15 in human spleen tissue lysate with KCTD15 antibody at (A) 0.5 and (B) 1 ug/ml.



Human Thyroid: Formalin-Fixed, Paraffin-Embedded (FFPE)