

Product datasheet for **AP23867PU-N**

OTUD4 (C-term) Rabbit Polyclonal Antibody

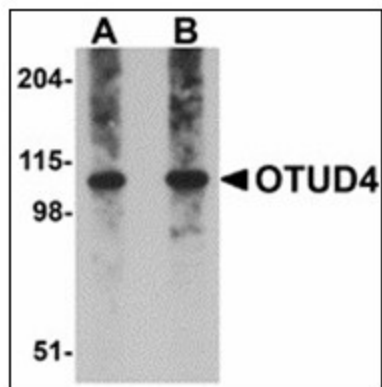
Product data:

Product Type:	Primary Antibodies
Applications:	ELISA, IF, IHC, WB
Recommended Dilution:	ELISA. Immunocytochemistry. Immunohistochemistry on Paraffin Sections: 5 µg/ml. Western Blot: 0.25 - 0.5 µg/ml.
Reactivity:	Human, Mouse, Rat
Host:	Rabbit
Clonality:	Polyclonal
Immunogen:	Synthetic peptide - KLH conjugated
Specificity:	This antibody reacts to the C-term of OTUD4.
Formulation:	PBS State: Purified State: Liquid purified Ig fraction Preservative: 0.02% sodium azide
Concentration:	lot specific
Purification:	Immunoaffinity Chromatography
Conjugation:	Unconjugated
Storage:	Store the antibody undiluted at 2-8°C for one month or (in aliquots) at -20°C for longer. Avoid repeated freezing and thawing.
Stability:	Shelf life: one year from despatch.
Gene Name:	OTU deubiquitinase 4
Database Link:	Entrez Gene 73945 Mouse Entrez Gene 307774 Rat Entrez Gene 54726 Human Q01804
Synonyms:	HIN1, KIAA1046

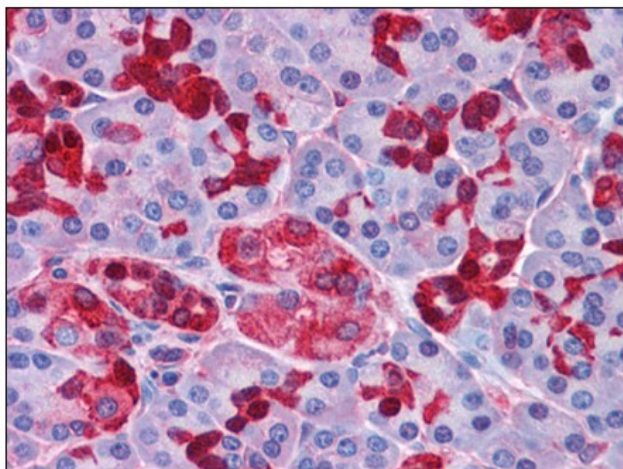


[View online »](#)

Product images:



Western blot analysis of OTUD4 in Daudi cell lysate with OTUD4 antibody at (A) 0.25 and (B) 0.5 ug/ml.



Human Pancreas: Formalin-Fixed, Paraffin-Embedded (FFPE)