

## Product datasheet for **AP23866PU-N**

### PCDH12 (N-term) Rabbit Polyclonal Antibody

#### Product data:

Product Type:	Primary Antibodies
Applications:	ELISA, IHC, WB
Recommended Dilution:	<b>ELISA.</b> <b>Immunohistochemistry on Paraffin Sections:</b> 5 µg/ml. <b>Western Blot:</b> 1 - 2 µg/ml.
Reactivity:	Human, Mouse, Rat
Host:	Rabbit
Clonality:	Polyclonal
Immunogen:	17 amino synthetic peptide near the amino terminus of Human PCDH12. <b>Epitope:</b> N-Terminus.
Specificity:	This antibody reacts to the N-term of PCDH12.
Formulation:	PBS containing 0.02% Sodium Azide State: Purified State: Liquid purified Ig fraction
Concentration:	lot specific
Purification:	Immunoaffinity Chromatography
Conjugation:	Unconjugated
Storage:	Store undiluted at 2-8°C for one month or (in aliquots) at -20°C for longer. Avoid repeated freezing and thawing.
Stability:	Shelf life: one year from despatch.
Gene Name:	protocadherin 12
Database Link:	<a href="#">Entrez Gene 53601 Mouse</a> <a href="#">Entrez Gene 116808 Rat</a> <a href="#">Entrez Gene 51294 Human</a> <a href="#">Q9NPG4</a>
Background:	PCDH12 / VE-Cadherin-2 belongs to the protocadherin gene family, a subfamily of the cadherin superfamily. The encoded protein consists of an extracellular domain containing 6 cadherin repeats, a transmembrane domain and a cytoplasmic tail that differs from those of the classical cadherins. The gene localizes to the region on chromosome 5 where the protocadherin gene clusters reside.

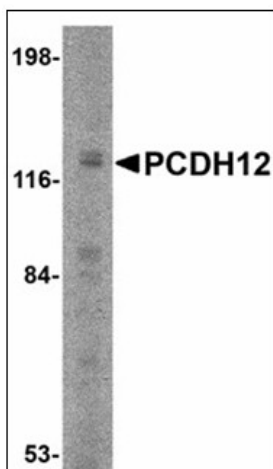


[View online »](#)

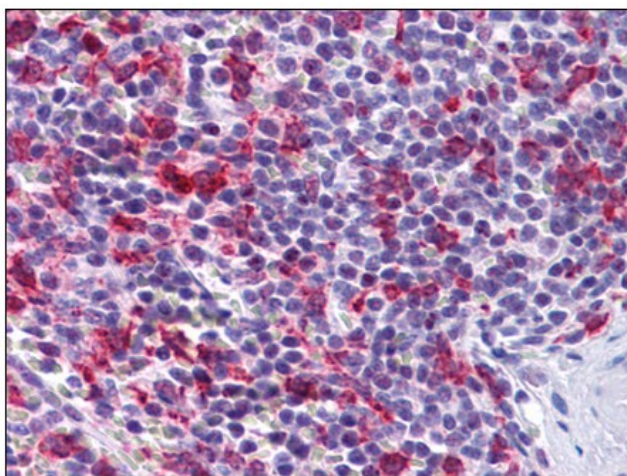
Synonyms: VE-cad-2, VE-cadherin-2

Protein Families: Transmembrane

### Product images:



Western blot analysis of PCDH12 in K562 cell lysate with PCDH12 antibody at 2 ug/ml.



Human Spleen: Formalin-Fixed, Paraffin-Embedded (FFPE)