

## Product datasheet for **AP23864PU-N**

### MTCH2 (N-term) Rabbit Polyclonal Antibody

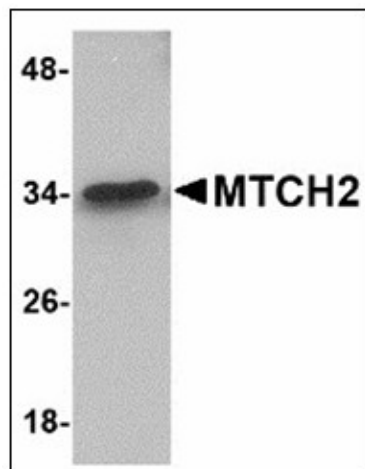
#### Product data:

Product Type:	Primary Antibodies
Applications:	ELISA, IHC, WB
Recommended Dilution:	<b>ELISA.</b> <b>Immunohistochemistry on Paraffin Sections:</b> 5 µg/ml. <b>Western Blot:</b> 1 - 2 µg/ml.
Reactivity:	Human, Mouse
Host:	Rabbit
Clonality:	Polyclonal
Immunogen:	15 amino acid peptide near the amino terminus of human MTCH2
Specificity:	This antibody reacts to the N-term of MTCH2.
Formulation:	PBS containing 0.02% sodium azide as preservative State: Purified State: Liquid purified Ig fraction
Concentration:	lot specific
Purification:	Immunoaffinity Chromatography
Conjugation:	Unconjugated
Storage:	Store the antibody undiluted at 2-8°C.
Stability:	Shelf life: one year from despatch.
Gene Name:	mitochondrial carrier 2
Database Link:	<a href="#">Entrez Gene 56428 Mouse</a> <a href="#">Entrez Gene 23788 Human</a> <a href="#">Q9Y6C9</a>
Synonyms:	Mitochondrial carrier homolog 2, MIMP, HSPC032

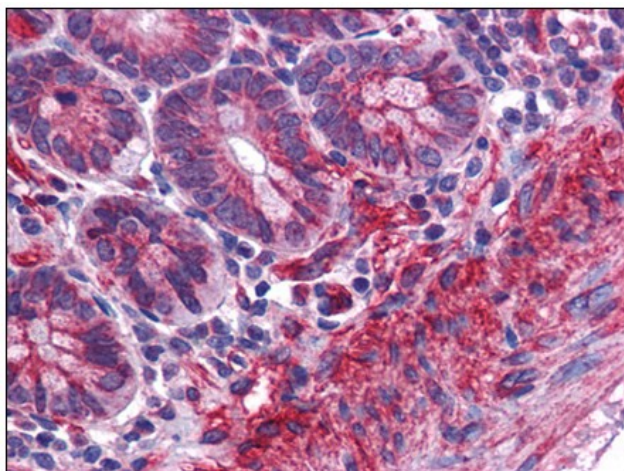


[View online »](#)

Product images:



Western blot analysis of MTCH2 in 293 cell lysate with MTCH2 antibody at 1 ug/ml.



Human Small Intestine: Formalin-Fixed, Paraffin-Embedded (FFPE)