

Product datasheet for **AP23863PU-N**

GNPDA2 (C-term) Rabbit Polyclonal Antibody

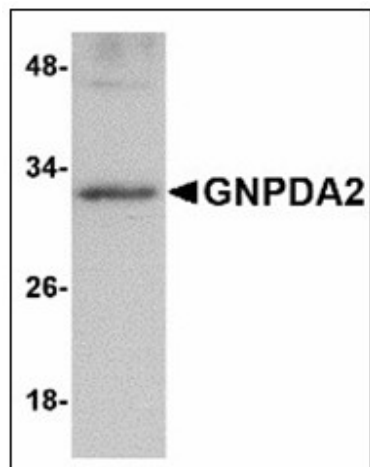
Product data:

Product Type:	Primary Antibodies
Applications:	ELISA, IF, IHC, WB
Recommended Dilution:	ELISA. Immunocytochemistry: 4 µg/ml. Immunohistochemistry on Paraffin Sections: 5 µg/ml. Western Blot: 1 - 2 µg/ml.
Reactivity:	Human, Mouse
Host:	Rabbit
Clonality:	Polyclonal
Immunogen:	Synthetic peptide - KLH conjugated
Specificity:	This antibody reacts to the C-term of GNPDA2.
Formulation:	PBS containing 0.02% sodium azide as preservative State: Purified State: Liquid purified Ig fraction
Concentration:	lot specific
Purification:	Immunoaffinity Chromatography
Conjugation:	Unconjugated
Storage:	Store the antibody undiluted at 2-8°C.
Stability:	Shelf life: one year from despatch.
Gene Name:	glucosamine-6-phosphate deaminase 2
Database Link:	Entrez Gene 67980 Mouse Entrez Gene 132789 Human Q8TDQ7
Synonyms:	Glucosamine-6-phosphate isomerase 2, SB52, GlcN6P deaminase 2
Protein Pathways:	Amino sugar and nucleotide sugar metabolism, Metabolic pathways

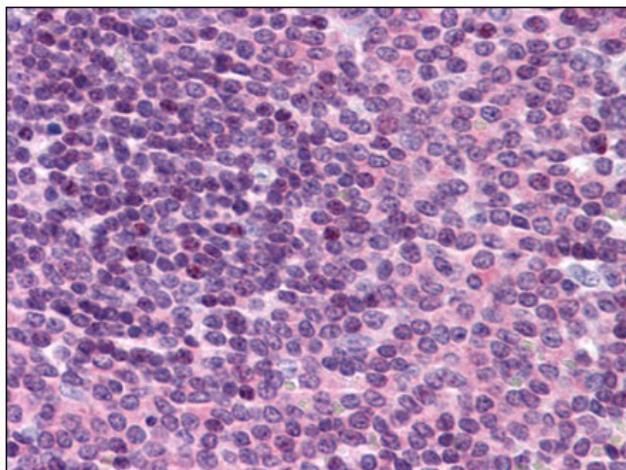


[View online »](#)

Product images:



Western blot analysis of GNPDA2 in human kidney lysate with GNPDA2 antibody at 1 ug/ml.



Human Spleen: Formalin-Fixed, Paraffin-Embedded (FFPE)