

Product datasheet for **AP23858PU-N**

MED28 Rabbit Polyclonal Antibody

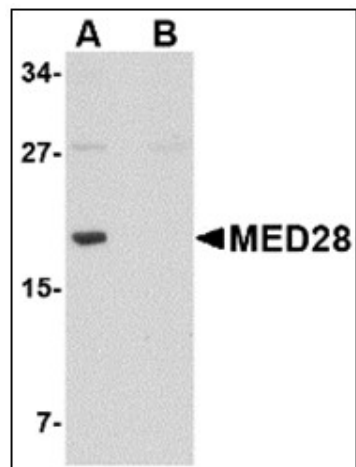
Product data:

Product Type:	Primary Antibodies
Applications:	IHC, WB
Recommended Dilution:	Immunohistochemistry on Paraffin Sections: 5 µg/ml. Western Blot: 0.5 - 1 µg/ml.
Reactivity:	Human, Mouse
Host:	Rabbit
Clonality:	Polyclonal
Immunogen:	Synthetic peptide, MED28 antibody was raised against a 17 amino acid peptide from near the center of human MED28.
Specificity:	This antibody reacts to the internal region of MED28.
Formulation:	PBS containing 0.02% sodium azide as preservative State: Purified State: Liquid purified Ig fraction
Concentration:	lot specific
Purification:	Immunoaffinity Chromatography
Conjugation:	Unconjugated
Storage:	Store the antibody undiluted at 2-8°C.
Stability:	Shelf life: one year from despatch.
Gene Name:	mediator complex subunit 28
Database Link:	Entrez Gene 66999 Mouse Entrez Gene 80306 Human Q9H204
Synonyms:	EG1, FKSG20, Mediator complex subunit 28
Protein Families:	Transcription Factors

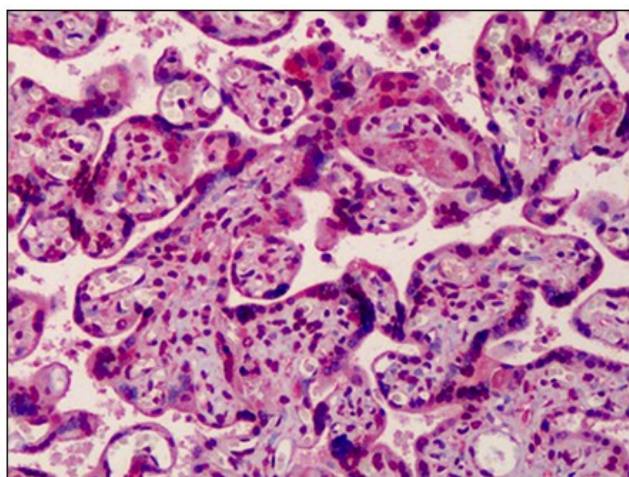


[View online »](#)

Product images:



Western blot analysis of MED28 in human brain tissue lysate with MED28 antibody at 1 ug/ml in (A) the absence and (B) the presence of blocking peptide.



Human Placenta: Formalin-Fixed, Paraffin-Embedded (FFPE)