

## Product datasheet for **AP23856PU-N**

### **POLR3F (N-term) Rabbit Polyclonal Antibody**

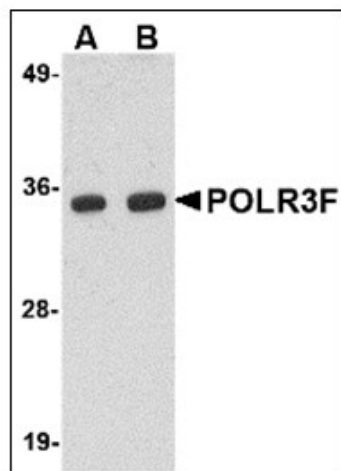
#### **Product data:**

Product Type:	Primary Antibodies
Applications:	IHC, WB
Recommended Dilution:	<b>Immunohistochemistry on Paraffin Sections:</b> 5 µg/ml. <b>Western Blot:</b> 0.5 - 1 µg/ml.
Reactivity:	Human, Mouse, Rat
Host:	Rabbit
Clonality:	Polyclonal
Immunogen:	Synthetic peptide, POLR3F antibody was raised against a 21 amino acid peptide from near the amino terminus of human POLR3F.
Specificity:	This antibody reacts to the N-term of POLR3F.
Formulation:	PBS containing 0.02% sodium azide as preservative State: Purified State: Liquid purified Ig fraction
Concentration:	lot specific
Purification:	Immunoaffinity Chromatography
Conjugation:	Unconjugated
Storage:	Store the antibody undiluted at 2-8°C.
Stability:	Shelf life: one year from despatch.
Gene Name:	polymerase (RNA) III subunit F
Database Link:	<a href="#">Entrez Gene 70408 Mouse</a> <a href="#">Entrez Gene 311487 Rat</a> <a href="#">Entrez Gene 10621 Human Q9H1D9</a>
Synonyms:	RNA polymerase III subunit C6, RPC6, RPC39
Protein Families:	Transcription Factors
Protein Pathways:	Cytosolic DNA-sensing pathway, Metabolic pathways, Purine metabolism, Pyrimidine metabolism, RNA polymerase

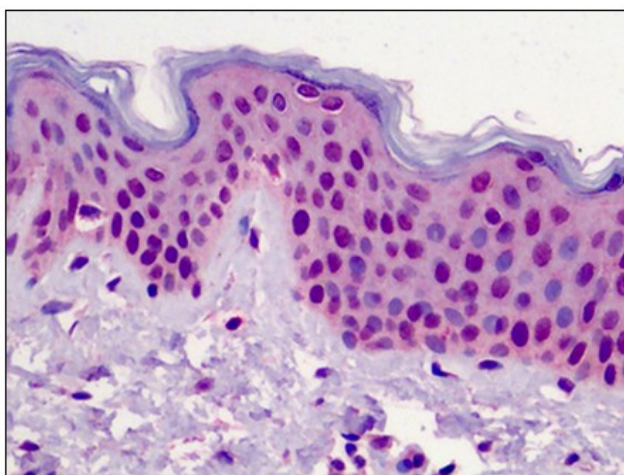


[View online »](#)

## Product images:



Western blot analysis of POLR3F in human brain tissue lysate with POLR3F antibody at (A) 0.5 and (B) 1 ug/ml.



Human Skin: Formalin-Fixed, Paraffin-Embedded (FFPE)