

Product datasheet for **AP23852PU-N**

SATB2 (C-term) Rabbit Polyclonal Antibody

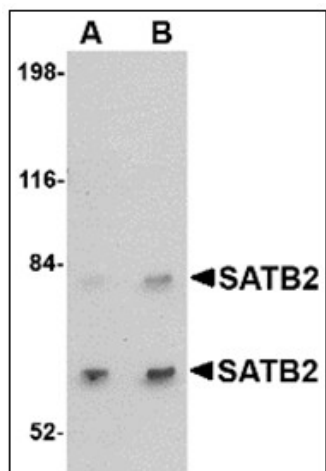
Product data:

Product Type:	Primary Antibodies
Applications:	IHC, WB
Recommended Dilution:	Immunohistochemistry on Paraffin Sections: 5 µg/ml. Western Blot: 2 - 4 µg/ml.
Reactivity:	Human, Mouse, Rat
Host:	Rabbit
Clonality:	Polyclonal
Immunogen:	Synthetic peptide, 14 amino acid peptide near the carboxy terminus of the human SATB2
Specificity:	This antibody reacts to the C-term of SATB homeobox 2.
Formulation:	PBS containing 0.02% sodium azide as preservative State: Purified State: Liquid purified Ig fraction
Concentration:	lot specific
Purification:	Immunoaffinity Chromatography
Conjugation:	Unconjugated
Storage:	Store the antibody undiluted at 2-8°C.
Stability:	Shelf life: one year from despatch.
Gene Name:	SATB homeobox 2
Database Link:	Entrez Gene 212712 Mouse Entrez Gene 501145 Rat Entrez Gene 23314 Human Q9UPW6
Synonyms:	KIAA1034
Protein Families:	Transcription Factors

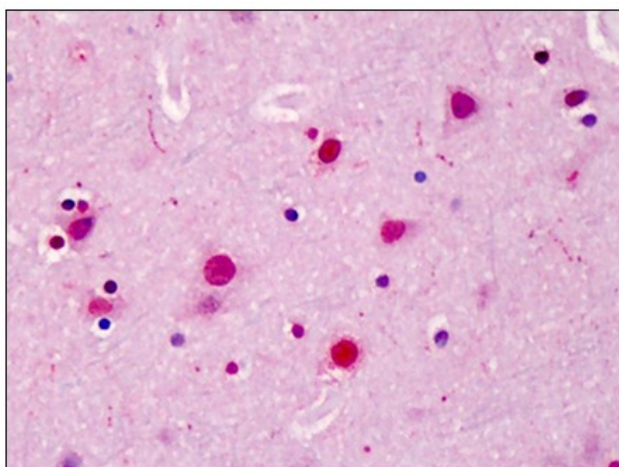


[View online »](#)

Product images:



Western blot analysis of SATB2 in A20 cell lysate with SATB2 antibody at (A) 2 and (B) 4 ug/ml.



Human Brain, Cortex: Formalin-Fixed, Paraffin-Embedded (FFPE)