

Product datasheet for **AP23839PU-N**

SNX16 (2-14) Goat Polyclonal Antibody

Product data:

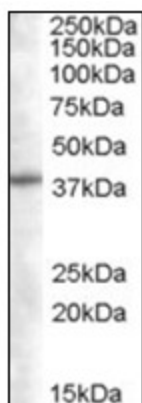
Product Type:	Primary Antibodies
Applications:	ELISA, IHC, WB
Recommended Dilution:	ELISA: 1/64000. Immunohistochemistry on Paraffin Sections: 3.75 µg/ml. Western Blot: 1/64000, 0.05 - 0.2 µg/ml.
Reactivity:	Bovine, Canine, Human, Mouse, Rat, Equine, Hamster, Monkey, Rabbit
Host:	Goat
Clonality:	Polyclonal
Immunogen:	Synthetic peptide from the N-terminus of human SNX16 (NP_071416.2; NP_690049.1; NP_690050.1)
Specificity:	This antibody reacts to the N-term of sorting nexin 16.
Formulation:	Tris saline buffer, pH 7.3 containing 0.5% BSA as stabilizer and 0.02% sodium azide as preservative State: Aff - Purified State: Liquid purified Ig fraction
Concentration:	lot specific
Purification:	Immunoaffinity Chromatography
Conjugation:	Unconjugated
Storage:	Upon receipt, store undiluted (in aliquots) at -20°C. Avoid repeated freezing and thawing.
Stability:	Shelf life: one year from despatch.
Gene Name:	sorting nexin 16
Database Link:	Entrez Gene 64088 Rat Entrez Gene 74718 Mouse Entrez Gene 64089 Human P57768
Background:	May be involved in several stages of intracellular trafficking. Plays a role in protein transport from early to late endosomes. Plays a role in protein transport to the lysosome. Promotes degradation of EGFR after EGF signaling. Plays a role in intracellular transport of vesicular stomatitis virus nucleocapsids from the endosome to the cytoplasm.



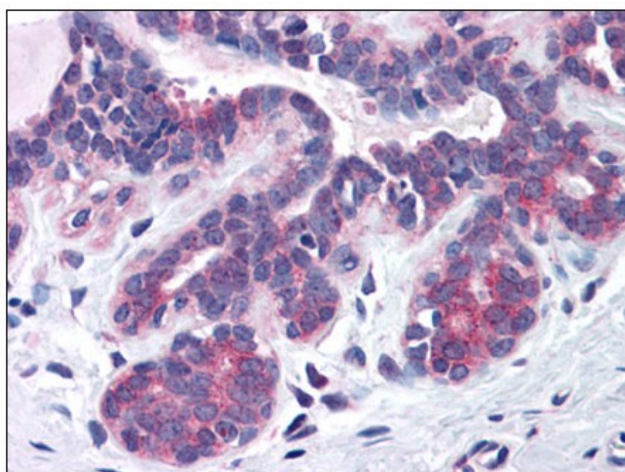
[View online »](#)

Synonyms: DKFZp666H147

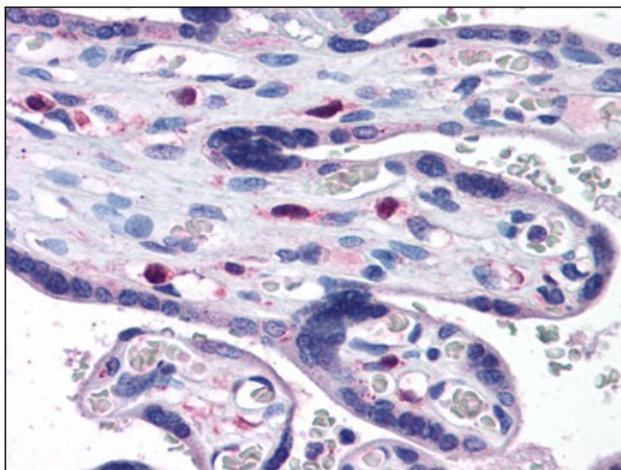
Product images:



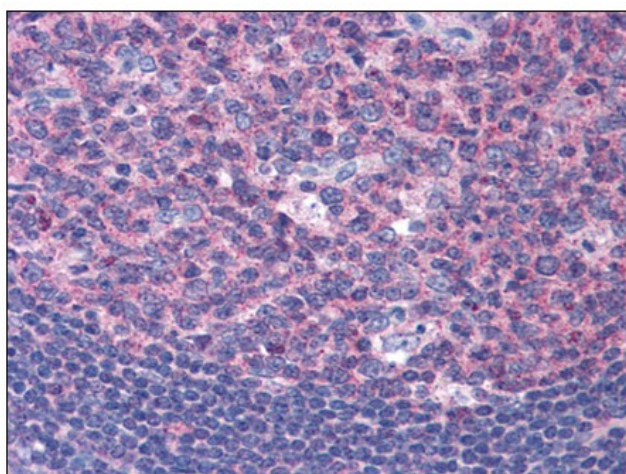
Antibody (0.05 ug/ml) staining of Daudi lysate (35 ug protein in RIPA buffer). Primary incubation was 1 hour. Detected by chemiluminescence.



Human Breast: Formalin-Fixed, Paraffin-Embedded (FFPE)



Human Placenta: Formalin-Fixed, Paraffin-Embedded (FFPE)



Human Tonsil: Formalin-Fixed, Paraffin-Embedded (FFPE)