

## Product datasheet for **AP23836PU-N**

### NRG1 (Isoform 10) (N-term) Rabbit Polyclonal Antibody

#### Product data:

Product Type:	Primary Antibodies
Applications:	ELISA, IHC, WB
Recommended Dilution:	<b>ELISA:</b> 1/10000. <b>Immunohistochemistry on Paraffin Sections:</b> 1/200. <b>Western Blot:</b> 1/500 - 1/1000.
Reactivity:	Human, Mouse, Rat
Host:	Rabbit
Isotype:	IgG
Clonality:	Polyclonal
Immunogen:	Synthetic peptide - KLH conjugated
Specificity:	This antibody detects endogenous levels of total NRG1 isoform-10 protein.
Formulation:	PBS (without Mg <sup>2+</sup> , Ca <sup>2+</sup> ), pH 7.4 containing 150mM Sodium Chloride, 0.02% Sodium Azide and 50% Glycerol State: Purified State: Liquid purified IgG fraction
Concentration:	lot specific
Purification:	Immunoaffinity Chromatography
Conjugation:	Unconjugated
Storage:	Store the antibody undiluted at 2-8°C for one month or (in aliquots) at -20°C for longer. Avoid repeated freezing and thawing.
Stability:	Shelf life: one year from despatch.
Gene Name:	neuregulin 1
Database Link:	<u><a href="#">Entrez Gene 112400 Rat</a></u> <u><a href="#">Entrez Gene 211323 Mouse</a></u> <u><a href="#">Entrez Gene 3084 Human Q02297</a></u>



[View online »](#)

**Background:**

Neuregulin 1 (NRG1) was originally identified as a 44-kD glycoprotein that interacts with the NEU/ERBB2 receptor tyrosine kinase to increase its phosphorylation on tyrosine residues. It is known that an extraordinary variety of different isoforms are produced from the NRG1 gene by alternative splicing. These isoforms include heregulins (HRGs), glial growth factors (GGFs) and sensory and motor neuron-derived factor (SMDF). They are tissue-specifically expressed and differ significantly in their structure. The HRG isoforms all contain immunoglobulin (Ig) and epidermal growth factor-like (EGF-like) domains. GGF and GGF2 isoforms contain a kringle-like sequence plus Ig and EGF-like domains; and the SMDF isoform shares only the EGF-like domain with other isoforms. The receptors for all NRG1 isoforms are the ERBB family of tyrosine kinase transmembrane receptors. Through interaction with ERBB receptors, NRG1 isoforms induce the growth and differentiation of epithelial, neuronal, glial, and other types of cells.

**Synonyms:**

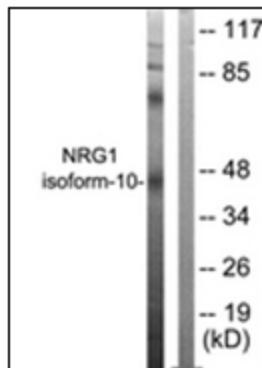
NRG1, GGF, HGL, HRGA, NDF, SMDF, Heregulin, HRG, Breast cancer cell differentiation factor p45, Glial growth factor, Neu differentiation factor

**Protein Families:**

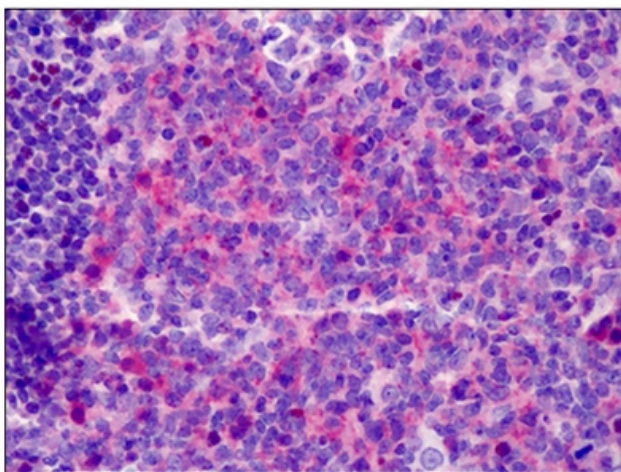
Druggable Genome, Secreted Protein, Transcription Factors, Transmembrane

**Protein Pathways:**

ErbB signaling pathway

**Product images:**

Western blot analysis of extracts from SKOV3 cells, using NRG1 isoform-10 Antibody. The lane on the right is treated with the synthesized peptide.



Human Tonsil: Formalin-Fixed, Paraffin-Embedded (FFPE)