

## Product datasheet for **AP23829PU-N**

### **GCC2 (1174-1185) Goat Polyclonal Antibody**

#### **Product data:**

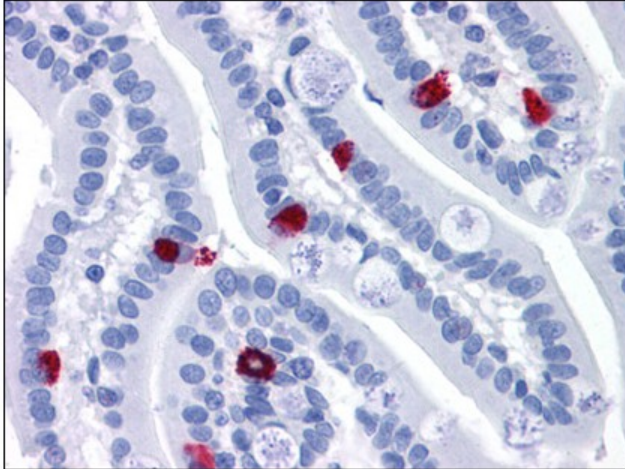
Product Type:	Primary Antibodies
Applications:	ELISA, IHC
Recommended Dilution:	<b>ELISA:</b> 1/16000. <b>Immunohistochemistry on Paraffin Sections:</b> 3.75 µg/ml.
Reactivity:	Human, Rat
Host:	Goat
Clonality:	Polyclonal
Immunogen:	Synthetic peptide from an internal region of human GCC2 (NP_055450.1; NP_852118.1)
Specificity:	This antibody reacts to the internal region of GCC2. This antibody is expected to recognize both isoforms (NP_055450.1 and NP_852118.1).
Formulation:	Tris saline, pH 7.3 containing 0.02% sodium azide as preservative and 0.5% BSA as stabilizer State: Aff - Purified State: Liquid purified Ig fraction
Concentration:	lot specific
Purification:	Immunoaffinity Chromatography
Conjugation:	Unconjugated
Storage:	Store the antibody at -20°C. Avoid repeated freezing and thawing.
Stability:	Shelf life: one year from despatch.
Gene Name:	GRIP and coiled-coil domain containing 2
Database Link:	<a href="#">Entrez Gene 309798 Rat</a> <a href="#">Entrez Gene 9648 Human</a> <a href="#">Q8IWJ2</a>
Background:	Golgin which probably tethers transport vesicles to the trans-Golgi network (TGN) and regulates vesicular transport between the endosomes and the Golgi. As a RAB9A effector it is involved in recycling of the mannose 6-phosphate receptor from the late endosomes to the TGN. May also play a role in transport between the recycling endosomes and the Golgi.
Synonyms:	Golgi coiled-coil protein GCC185, KW-11, NY-REN-5, se1-1, KIAA0336, RANBP2L4



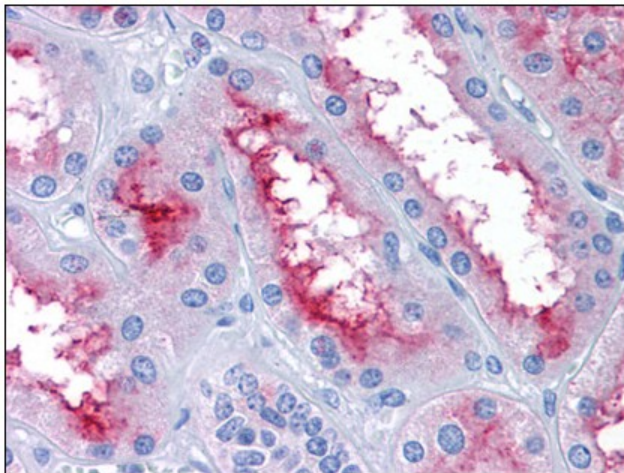
[View online »](#)

**Note:** Western Blot: Preliminary experiments gave an approx 60kD band in Human Lymph Node and Testis lysates after 0.03 ug/ml antibody staining. Please note that currently we cannot find an explanation in the literature for the band we observe given the calculated size of 185kD according to NP\_055450.1 and of 196kD according to NP\_852118.1. The 60kD band was successfully blocked by incubation with the immunizing peptide. We would appreciate any feedback from people in the field - have any results been reported with other antibodies / lysates? Have any further splice variants / modified forms been reported?

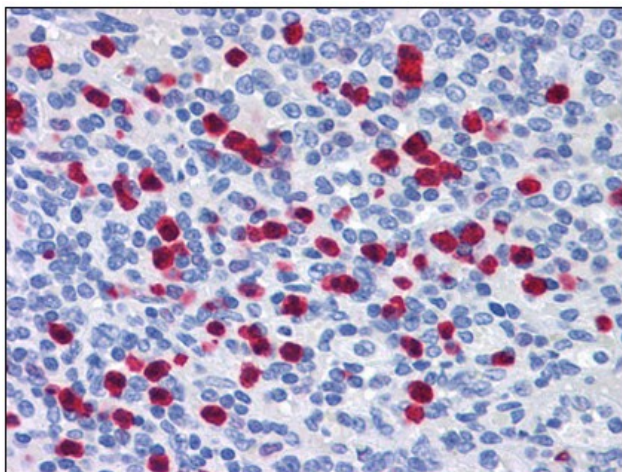
**Product images:**



Human Small Intestine: Formalin-Fixed, Paraffin-Embedded (FFPE)



Human Kidney: Formalin-Fixed, Paraffin-Embedded (FFPE)



Human Spleen: Formalin-Fixed, Paraffin-Embedded (FFPE)