

Product datasheet for **AP23828PU-N**

FH (176-189) Goat Polyclonal Antibody

Product data:

Product Type:	Primary Antibodies
Applications:	ELISA, IHC, WB
Recommended Dilution:	ELISA: 1/64000. Immunohistochemistry on Paraffin Sections: 3.75 µg/ml. Western Blot.
Reactivity:	Canine, Human, Mouse, Rat, Bovine, Chicken, Drosophila, Equine, Hamster, Insect, Monkey, Porcine, Sheep, Xenopus, Zebrafish
Host:	Goat
Clonality:	Polyclonal
Immunogen:	Synthetic peptide from an internal region of human FH
Specificity:	This antibody reacts to the internal region of FH.
Formulation:	Tris saline buffer, pH 7.3 containing 0.5% BSA as stabilizer and 0.02% sodium azide as preservative State: Aff - Purified State: Liquid purified Ig fraction
Concentration:	lot specific
Purification:	Immunoaffinity Chromatography
Conjugation:	Unconjugated
Storage:	Upon receipt, store undiluted (in aliquots) at -20°C. Avoid repeated freezing and thawing.
Stability:	Shelf life: one year from despatch.
Gene Name:	fumarate hydratase
Database Link:	Entrez Gene 24368 Rat Entrez Gene 14193 Mouse Entrez Gene 2271 Human P07954



[View online »](#)

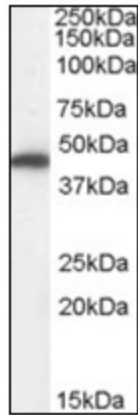
Background: FH / Fumarase / MCL is an enzymatic component of the tricarboxylic acid (TCA) cycle, or Krebs cycle, and catalyzes the formation of L-malate from fumarate. It exists in both a cytosolic form and an N-terminal extended form, differing only in the translation start site used. The N-terminal extended form is targeted to the mitochondrion, where the removal of the extension generates the same form as in the cytoplasm.

Synonyms: HLRCC, LRCC, MCL, MCUL1

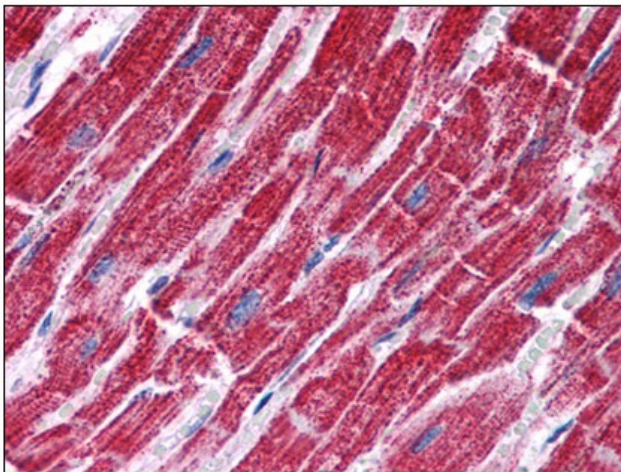
Protein Families: Druggable Genome

Protein Pathways: Citrate cycle (TCA cycle), Metabolic pathways, Pathways in cancer, Renal cell carcinoma

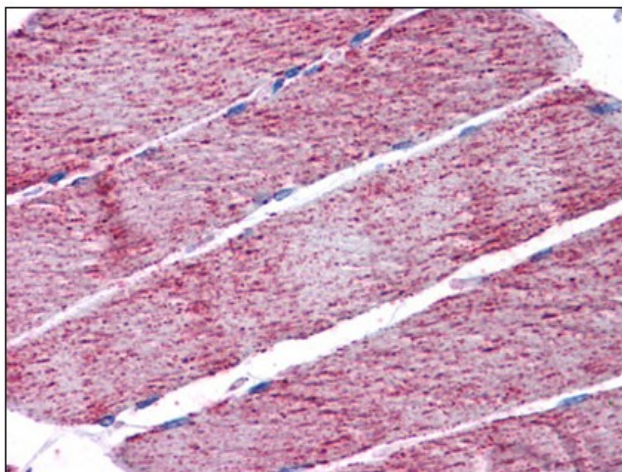
Product images:



Antibody (0.01 ug/ml) staining of Human Kidney lysate (35 ug protein in RIPA buffer). Primary incubation was 1 hour. Detected by chemiluminescence.



Human Heart: Formalin-Fixed, Paraffin-Embedded (FFPE)



Human Skeletal Muscle: Formalin-Fixed, Paraffin-Embedded (FFPE)