

## Product datasheet for **AP23825PU-N**

### Cytochrome P450 26B (CYP26B1) (418-430) Goat Polyclonal Antibody

#### Product data:

Product Type:	Primary Antibodies
Applications:	ELISA, IHC
Recommended Dilution:	<b>ELISA:</b> 1/128000. <b>Immunohistochemistry on Paraffin Sections:</b> 3.75 µg/ml.
Reactivity:	Canine, Human, Mouse, Rat, Equine, Hamster, Monkey, Rabbit
Host:	Goat
Clonality:	Polyclonal
Immunogen:	Synthetic peptide from an internal region of human CYP26B1
Specificity:	This antibody reacts to the internal region of CYP26B1.
Formulation:	Tris saline buffer, pH 7.3 containing 0.5% BSA as stabilizer and 0.02% sodium azide as preservative State: Aff - Purified State: Liquid purified Ig fraction
Concentration:	lot specific
Purification:	Immunoaffinity Chromatography
Conjugation:	Unconjugated
Storage:	Upon receipt, store the antibody at -20°C. Avoid repeated freezing and thawing.
Stability:	Shelf life: one year from despatch.
Gene Name:	cytochrome P450 family 26 subfamily B member 1
Database Link:	<a href="#">Entrez Gene 232174 Mouse</a> <a href="#">Entrez Gene 312495 Rat</a> <a href="#">Entrez Gene 56603 Human Q9NR63</a>
Background:	Involved in the metabolism of retinoic acid (RA), rendering this classical morphogen inactive through oxidation. Involved in the specific inactivation of all-trans-retinoic acid (all-trans-RA), with a preference for the following substrates: all-trans-RA > 9-cis-RA > 13-cis-RA. Generates several hydroxylated forms of RA, including 4-OH-RA, 4-oxo-RA, and 18-OH-RA. Essential for postnatal survival.
Synonyms:	CYP26A2, Cytochrome P450RAI2, Cytochrome P450 26B1, Cytochrome P450 26A2

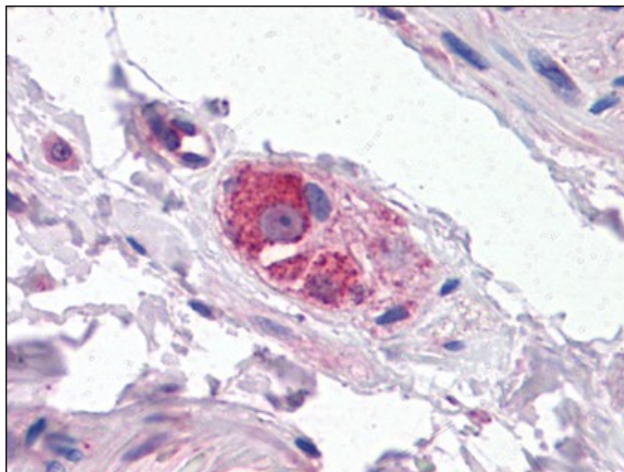


[View online >](#)

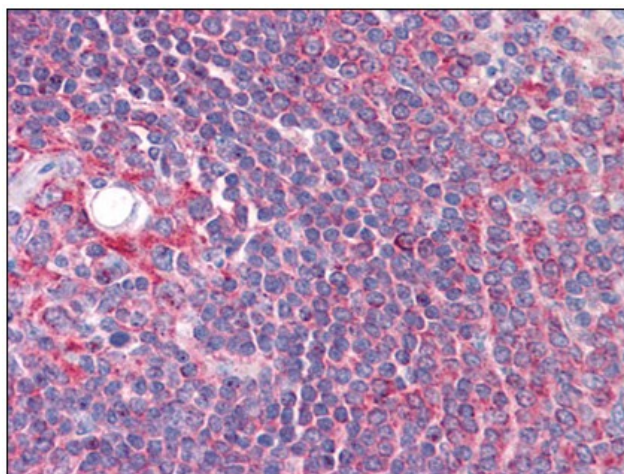
Protein Families: Druggable Genome, P450

Protein Pathways: Retinol metabolism

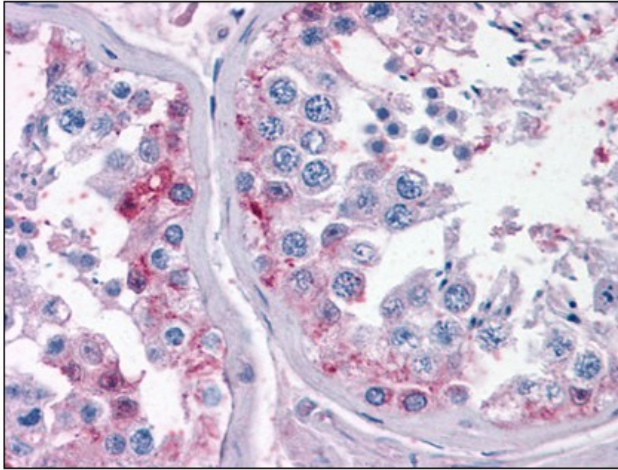
**Product images:**



Human Small Intestine, Submucosal Plexus:  
Formalin-Fixed, Paraffin-Embedded (FFPE)



Human Spleen: Formalin-Fixed, Paraffin-  
Embedded (FFPE)



Human Testis: Formalin-Fixed, Paraffin-Embedded (FFPE)