

## Product datasheet for **AP23820PU-N**

### **FBP17 (FNBP1) (132-145) Goat Polyclonal Antibody**

#### **Product data:**

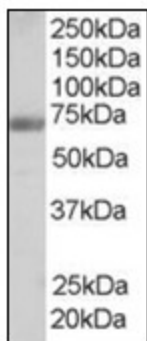
Product Type:	Primary Antibodies
Applications:	ELISA, IHC, WB
Recommended Dilution:	<b>ELISA:</b> 1/32000. <b>Immunohistochemistry on Paraffin Sections:</b> 3.75 µg/ml. <b>Western Blot:</b> 1/32000, 0.25 - 2 µg/ml.
Reactivity:	Human, Mouse, Rat, Bovine, Bat, Canine, Equine, Hamster, Monkey, Porcine, Zebrafish
Host:	Goat
Clonality:	Polyclonal
Immunogen:	Synthetic peptide from an internal region of human FNBP1
Specificity:	This antibody reacts to the internal region of FNBP1.
Formulation:	Tris saline buffer, pH 7.3 containing 0.5% BSA as stabilizer and 0.02% sodium azide as preservative State: Aff - Purified State: Liquid purified Ig fraction
Concentration:	lot specific
Purification:	Immunoaffinity Chromatography
Conjugation:	Unconjugated
Storage:	Upon receipt, store the antibody at -20°C. Avoid repeated freezing and thawing.
Stability:	Shelf life: one year from despatch.
Gene Name:	formin binding protein 1
Database Link:	<a href="#">Entrez Gene 14269 Mouse</a> <a href="#">Entrez Gene 192348 Rat</a> <a href="#">Entrez Gene 23048 Human</a> <a href="#">Q96RU3</a>
Background:	May act as a link between RND2 signaling and regulation of the actin cytoskeleton (By similarity). Required to coordinate membrane tubulation with reorganization of the actin cytoskeleton during the late stage of clathrin-mediated endocytosis. Binds to lipids such as phosphatidylinositol 4,5-bisphosphate and phosphatidylserine and promotes membrane invagination and the formation of tubules.



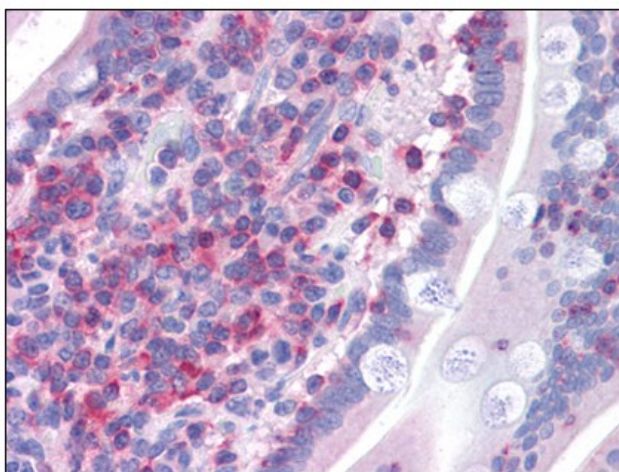
[View online »](#)

Synonyms: FNBP1, FBP17, KIAA0554

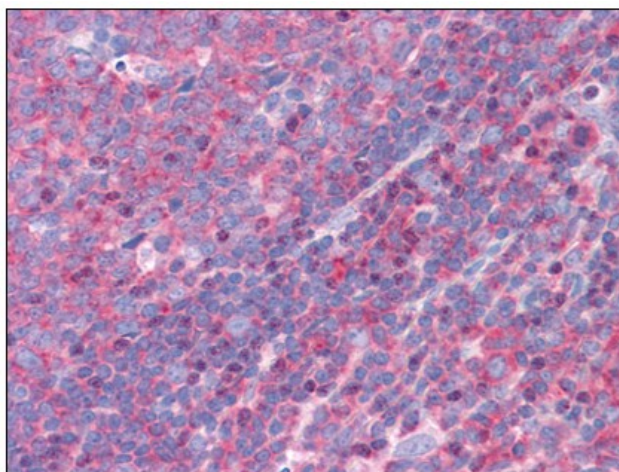
**Product images:**



Antibody staining (0.25 ug/ml) of human testis lysate (RIPA buffer, 35 ug total protein per lane). Primary incubated for 1 hour. Detected by western blot using chemiluminescence.



Human Small Intestine: Formalin-Fixed, Paraffin-Embedded (FFPE)



Human Tonsil: Formalin-Fixed, Paraffin-Embedded (FFPE)