

Product datasheet for **AP23819PU-N**

HIP2 (UBE2K) (144-157) Goat Polyclonal Antibody

Product data:

Product Type:	Primary Antibodies
Applications:	ELISA, IHC, WB
Recommended Dilution:	ELISA: 1/2000. Immunohistochemistry on Paraffin Sections: 3.75 µg/ml. Western Blot: 1/2000, 1 - 3 µg/ml.
Reactivity:	Human, Bovine, Bat, Canine, Chicken, Equine, Goat, Hamster, Monkey, Mouse, Porcine, Rabbit, Rat, Xenopus, Zebrafish
Host:	Goat
Clonality:	Polyclonal
Immunogen:	Synthetic peptide from C-terminus of human HIP2 (aa 144-157)
Specificity:	This antibody reacts to the C-term of UBE2K. It is expected to recognise isoform 1 (NP_005330.1), isoform 2 (NP_001104582.1) and isoform 3 (NP_001104583.1).
Formulation:	Tris saline buffer, pH 7.3 containing 0.5% BSA as stabilizer and 0.02% sodium azide as preservative State: Aff - Purified State: Liquid purified Ig fraction
Concentration:	lot specific
Purification:	Immunoaffinity Chromatography
Conjugation:	Unconjugated
Storage:	Store the antibody at -20°C. Avoid repeated freezing and thawing.
Stability:	Shelf life: one year from despatch.
Gene Name:	ubiquitin conjugating enzyme E2 K
Database Link:	<u>Entrez Gene 53323 Mouse</u> <u>Entrez Gene 289623 Rat</u> <u>Entrez Gene 3093 Human</u> <u>P61086</u>



[View online »](#)

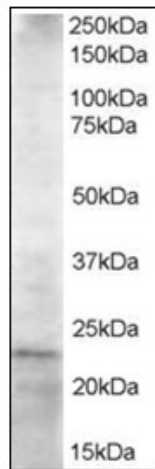
Background: Accepts ubiquitin from the E1 complex and catalyzes its covalent attachment to other proteins. In vitro, in the presence or in the absence of BRCA1-BARD1 E3 ubiquitin-protein ligase complex, catalyzes the synthesis of 'Lys-48'-linked polyubiquitin chains. Does not transfer ubiquitin directly to but elongates monoubiquitinated substrate protein.

Synonyms: HIP-2, Ubiquitin-conjugating enzyme E2 K, E2(25K), E2-25K, Ubiquitin-protein ligase, LIG, Ubiquitin carrier protein, Huntingtin-interacting protein 2

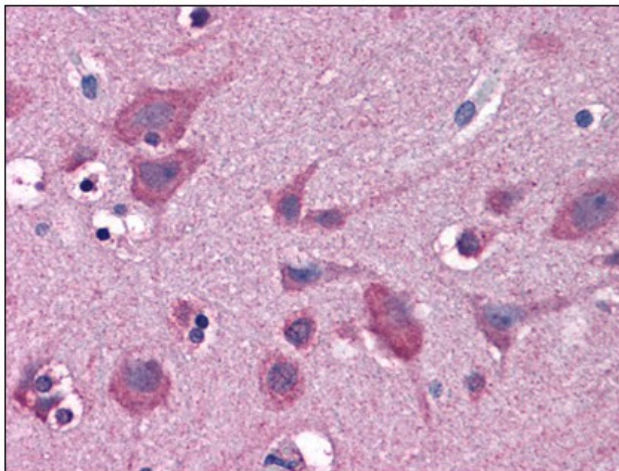
Protein Families: Druggable Genome, Transcription Factors

Protein Pathways: Ubiquitin mediated proteolysis

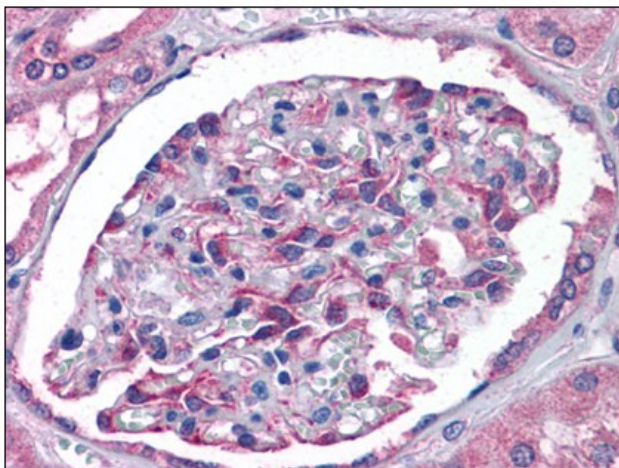
Product images:



Antibody staining (1.5 ug/ml) of Jurkat lysate (RIPA buffer, 35 ug total protein per lane). Primary incubated for 1 hour. Detected by western blot using chemiluminescence.



Human Brain, Cortex: Formalin-Fixed, Paraffin-Embedded (FFPE)



Human Kidney: Formalin-Fixed, Paraffin-Embedded (FFPE)