

Product datasheet for **AP23815PU-N**

Esa1 (FLOT2) (415-428) Goat Polyclonal Antibody

Product data:

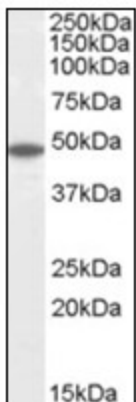
Product Type:	Primary Antibodies
Applications:	ELISA, IHC, WB
Recommended Dilution:	ELISA: 1/32000. Immunohistochemistry on Paraffin Sections: 3.75 µg/ml. Western Blot: 0.1 - 0.3 µg/ml.
Reactivity:	Human, Monkey
Host:	Goat
Clonality:	Polyclonal
Immunogen:	Synthetic peptide from the C-terminus of human FLOT2.
Specificity:	This antibody reacts to the C-term of FLOT2.
Formulation:	Tris-buffered saline, pH 7.3, 0.5% BSA, 0.02% sodium azide State: Aff - Purified State: Liquid purified Ig fraction
Concentration:	lot specific
Purification:	Immunoaffinity Chromatography
Conjugation:	Unconjugated
Storage:	Store the antibody at -20°C. Avoid repeated freezing and thawing.
Stability:	Shelf life: one year from despatch.
Gene Name:	flotillin 2
Database Link:	Entrez Gene 2319 Human Q14254
Background:	Caveolae are small domains on the inner cell membrane involved in vesicular trafficking and signal transduction. FLOT2 encodes a caveolae-associated, integral membrane protein. Flotillin 2 is thought to function in neuronal signaling.
Synonyms:	Epidermal surface antigen, ESA, ESA1, M17S1, Reggie-1, Reg1, REG-1
Protein Families:	Druggable Genome



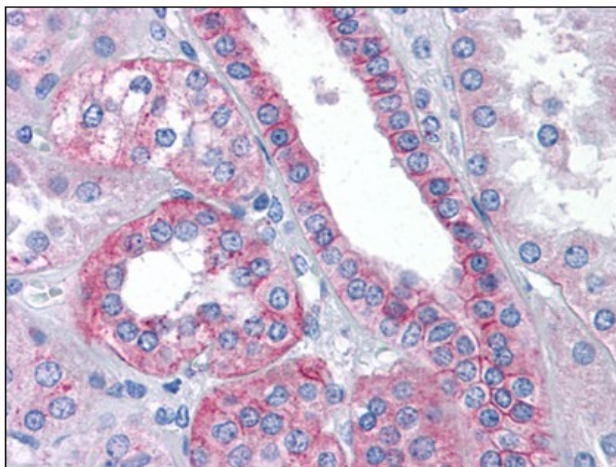
[View online »](#)

Protein Pathways: Insulin signaling pathway

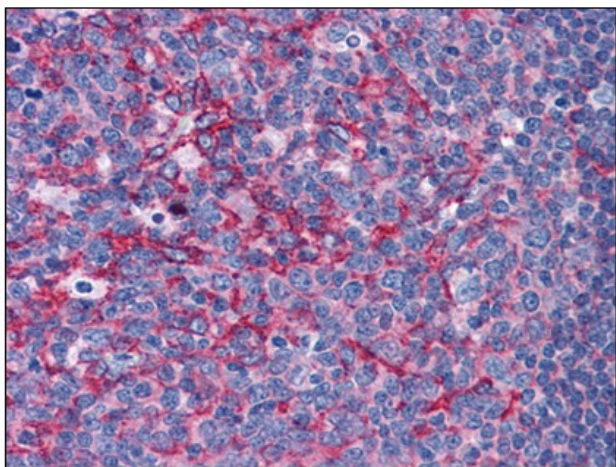
Product images:



FLOT2 antibody (0.1 ug/ml) staining of Human Brain (Cerebellum) lysate (35 ug protein/ml in RIPA buffer). Primary incubation was 1 hour. Detected by chemiluminescence.



Human Kidney: Formalin-Fixed, Paraffin-Embedded (FFPE)



Human Tonsil: Formalin-Fixed, Paraffin-Embedded (FFPE)