

Product datasheet for **AP23814PU-N**

Septin 3 (SEPT3) (15-26) Goat Polyclonal Antibody

Product data:

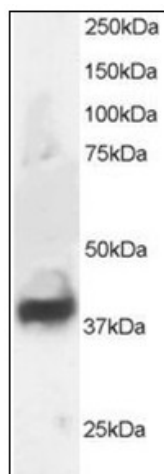
Product Type:	Primary Antibodies
Applications:	IHC, WB
Recommended Dilution:	Immunohistochemistry on Paraffin Sections: 3.75 µg/ml. Western Blot: 0.5 - 2 µg/ml.
Reactivity:	Canine, Human, Mouse, Rat, Bovine, Bat, Equine, Hamster, Monkey, Porcine, Rabbit
Host:	Goat
Clonality:	Polyclonal
Immunogen:	Synthetic peptide from N-terminus of human SEPT3
Specificity:	This antibody reacts to the N-term of SEPT3. It is expected to recognize both reported isoforms according to NP_663786.1 and NP_061979.3.
Formulation:	Tris saline buffer, pH 7.3 containing 0.5% BSA as stabilizer and 0.02% sodium azide as preservative State: Aff - Purified State: Liquid purified Ig fraction
Concentration:	lot specific
Purification:	Immunoaffinity Chromatography
Conjugation:	Unconjugated
Storage:	Store the antibody at -20°C. Avoid repeated freezing and thawing.
Stability:	Shelf life: one year from despatch.
Gene Name:	septin 3
Database Link:	Entrez Gene 24050 Mouse Entrez Gene 56003 Rat Entrez Gene 55964 Human Q9UH03
Background:	SEPT3 / Septin 3 belongs to the septin family of GTPases. Members of this family are required for cytokinesis. Expression is upregulated by retinoic acid in a human teratocarcinoma cell line. The specific function of this gene has not been determined. Alternative splicing of this gene results in two transcript variants encoding different isoforms.



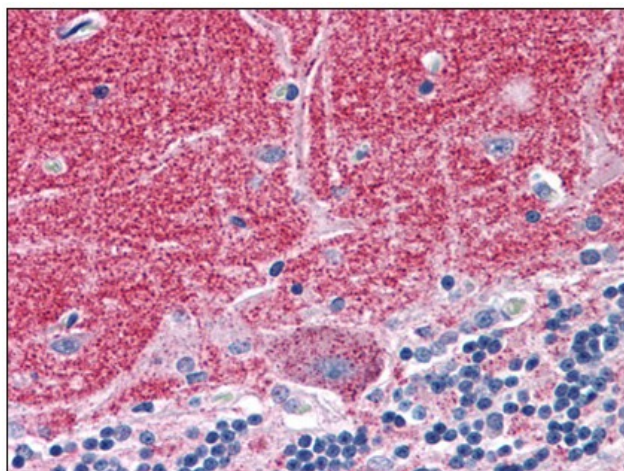
[View online »](#)

Synonyms: Neuronal-specific septin-3, SEP3

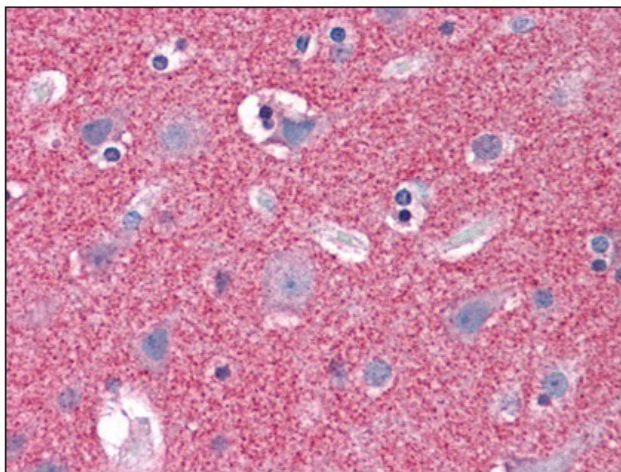
Product images:



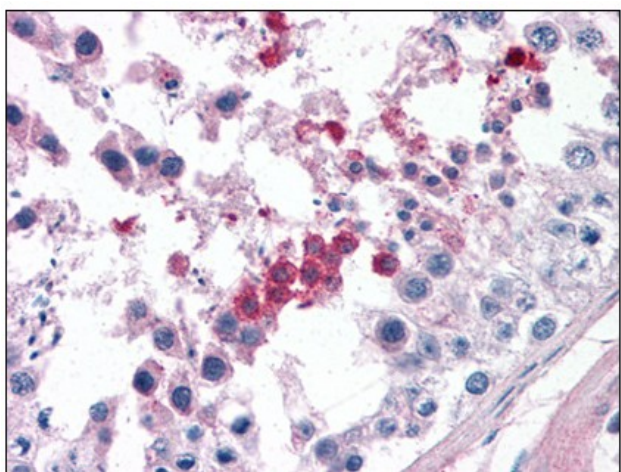
Antibody staining (1 ug/ml) of Human Brain lysate (RIPA buffer, 30 ug total protein per lane). Primary incubated for 1 hour. Detected by western blot using chemiluminescence.



Human Brain, Cerebellum: Formalin-Fixed, Paraffin-Embedded (FFPE)



Human Brain, Cortex: Formalin-Fixed, Paraffin-Embedded (FFPE)



Human Testis: Formalin-Fixed, Paraffin-Embedded (FFPE)