

Product datasheet for **AP23813PU-N**

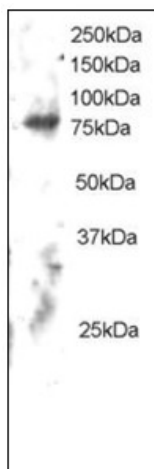
ELMO2 (707-720) Goat Polyclonal Antibody

Product data:

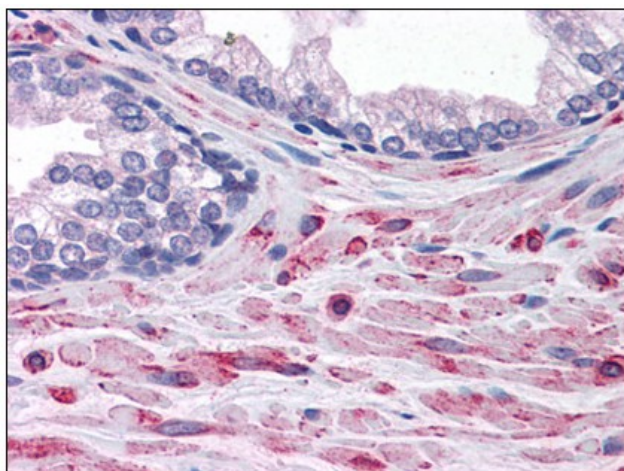
Product Type:	Primary Antibodies
Applications:	IHC, WB
Recommended Dilution:	Immunohistochemistry on Paraffin Sections: 3.75 µg/ml. Western Blot: 1 - 3 µg/ml.
Reactivity:	Human, Mouse, Bovine, Bat, Canine, Chicken, Equine, Hamster, Monkey, Rabbit, Rat, Xenopus
Host:	Goat
Clonality:	Polyclonal
Immunogen:	Synthetic peptide from C-terminus of human ELMO2
Specificity:	This antibody reacts to the C-term of ELMO2 (aa 707-720).
Formulation:	Tris saline buffer, pH 7.3 containing 0.5% BSA as stabilizer and 0.02% sodium azide as preservative State: Aff - Purified State: Liquid purified Ig fraction
Concentration:	lot specific
Purification:	Immunoaffinity Chromatography
Conjugation:	Unconjugated
Storage:	Upon receipt, store the antibody at -20°C. Avoid repeated freezing and thawing.
Stability:	Shelf life: one year from despatch.
Gene Name:	engulfment and cell motility 2
Database Link:	Entrez Gene 140579 Mouse Entrez Gene 362271 Rat Entrez Gene 63916 Human Q96JJ3
Background:	Involved in cytoskeletal rearrangements required for phagocytosis of apoptotic cells and cell motility. Acts in association with DOCK1 and CRK. Was initially proposed to be required in complex with DOCK1 to activate Rac Rho small GTPases. May enhance the guanine nucleotide exchange factor (GEF) activity of DOCK1.
Synonyms:	ELMO 2, ELMO-2, CED12A, CED-12A, KIAA1834



[View online »](#)

Product images:

Antibody staining (2 ug/ml) of Human Brain lysate (RIPA buffer, 30 ug total protein per lane). Primary incubated for 12 hour. Detected by western blot using chemiluminescence.



Human Prostate: Formalin-Fixed, Paraffin-Embedded (FFPE)