

Product datasheet for **AP23812PU-N**

ATF6 (C-term) Goat Polyclonal Antibody

Product data:

Product Type:	Primary Antibodies
Applications:	ELISA, IHC
Recommended Dilution:	ELISA: 1/8000. Immunohistochemistry on Paraffin Sections: 2.5 µg/ml.
Reactivity:	Human, Mouse, Rabbit
Host:	Goat
Clonality:	Polyclonal
Immunogen:	Synthetic peptide from C-terminus of human ATF6
Specificity:	This antibody reacts to the C-term of ATF6.
Formulation:	Tris saline buffer, pH 7.3 containing 0.5% BSA as stabilizer and 0.02% sodium azide as preservative State: Aff - Purified State: Liquid purified Ig fraction
Concentration:	lot specific
Purification:	Immunoaffinity Chromatography
Conjugation:	Unconjugated
Storage:	Store the antibody undiluted at 2-8°C for one month or (in aliquots) at -20°C for longer. Avoid repeated freezing and thawing.
Stability:	Shelf life: one year from despatch.
Gene Name:	activating transcription factor 6
Database Link:	Entrez Gene 226641 Mouse Entrez Gene 22926 Human P18850
Background:	Activating Transcription Factor 6 (ATF6) is a type II transmembrane glycoprotein located on the ER membrane. In response to ER stress ATF6 is cleaved and the N-terminus including the leucine zipper (which faces the cytosol) moves to the nucleus. Once in the nucleus ATF6 binds to the ER stress response elements in ER stress genes. Site-1 and site-2 protease enzymes that process sterol regulatory binding proteins in response to cholesterol derivation cleave ATF6.



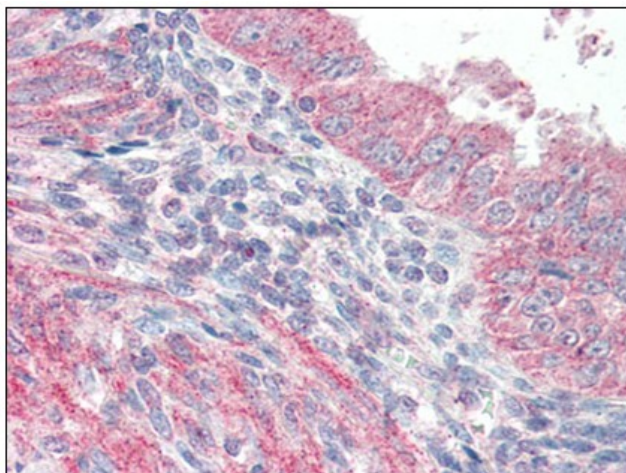
[View online »](#)

Synonyms: ATF-6, Activating transcription factor 6 alpha

Protein Families: Transcription Factors

Protein Pathways: Alzheimer's disease

Product images:



Human Uterus (formalin-fixed, paraffin-embedded) stained with ATF6 antibody at 2.5 ug/ml followed by biotinylated anti-goat IgG secondary antibody, alkaline phosphatase-streptavidin and chromogen.