

Product datasheet for **AP23772PU-N**

Semaphorin 3E (SEMA3E) Goat Polyclonal Antibody

Product data:

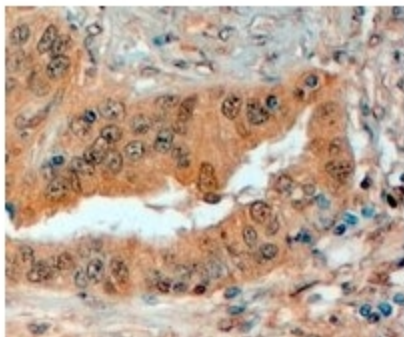
Product Type:	Primary Antibodies
Applications:	ELISA, IHC
Recommended Dilution:	Peptide ELISA: Detection Limit: 1/128000. Western blot: Preliminary experiments gave an approx 35kDa band in Human Prostate lysates after 0.03 µg/ml antibody staining. Please note that currently we cannot find an explanation in the literature for the band we observe given the calculated size of 89.2kDa according to NP_036563.1. The 35kDa band was successfully blocked by incubation with the immunizing peptide. Immunohistochemistry: 4-6 µg/ml. In paraffin embedded Human Prostate shows membranous staining of secretory cells in the gland.
Reactivity:	Canine, Human, Mouse
Host:	Goat
Clonality:	Polyclonal
Immunogen:	Peptide with sequence from the internal region of the protein sequence according to NP_036563.1.
Specificity:	Recognizes Semaphorin 3E (internal).
Formulation:	Tris saline, pH 7.3 containing 0.02% Sodium Azide as preservative and 0.5% BSA as stabilizer. State: Aff - Purified State: Liquid purified Ig fraction.
Concentration:	lot specific
Purification:	Ammonium Sulphate Precipitation followed by antigen Affinity Chromatography using the immunizing peptide.
Conjugation:	Unconjugated
Storage:	Store the antibody undiluted at 2-8°C for one month or (in aliquots) at -20°C for longer. Avoid repeated freezing and thawing.
Stability:	Shelf life: one year from despatch.
Gene Name:	semaphorin 3E
Database Link:	Entrez Gene 9723 Human O15041



[View online »](#)

Synonyms: Semaphorin-3E, SEMAH, KIAA0331

Product images:



SEMA3E antibody staining of Paraffin Embedded Human Prostate at 4 ug/ml. Steamed antigen retrieval with citrate buffer pH 6, HRP-staining.