

## Product datasheet for **AP23763PU-N**

### **TXNDC5 (269-282) Goat Polyclonal Antibody**

#### **Product data:**

Product Type:	Primary Antibodies
Applications:	ELISA, IHC, WB
Recommended Dilution:	<b>Peptide ELISA:</b> 1/64000 (Detection Limit). <b>Western blot:</b> 0.03-0.1 µg/ml. Approx 50+38kDa bands observed in Human Lymph Nodes lysates (calculated MW of 47.6kDa according to NP_110437.2 and of 36.2kDa according to NP_001139021.1). A 48kDa band was observed in Mouse Lymph Node while a 37-38kDa doublet was observed in Mouse Stomach lysates and in Mouse Intestine lysates. <b>Immunohistochemistry on Paraffin Sections:</b> 3.75 µg/ml (Human Small Intestine).
Reactivity:	Bovine, Human, Mouse
Host:	Goat
Clonality:	Polyclonal
Immunogen:	Peptide with sequence from the internal region of the protein sequence according to NP_110437.2; NP_001139021.1.
Specificity:	Recognizes TXNDC5 (269-282). This antibody is expected to recognize both reported isoforms (NP_110437.2, NP_001139021.1) of TXNDC5.
Formulation:	Tris saline, pH~7.3 State: Aff - Purified State: Liquid purified Ig fraction Stabilizer: 0.5% BSA Preservative: 0.02% Sodium Azide
Concentration:	lot specific
Purification:	Ammonium Sulphate Precipitation followed by antigen Affinity Chromatography using the immunizing peptide.
Conjugation:	Unconjugated
Storage:	Store undiluted at 2-8°C for one month or (in aliquots) at -20°C for longer. Avoid repeated freezing and thawing.
Stability:	Shelf life: one year from despatch.
Gene Name:	thioredoxin domain containing 5



[View online »](#)

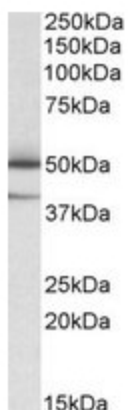
**Database Link:** [Entrez Gene 105245 Mouse](#)[Entrez Gene 81567 Human](#)  
[Q8NBS9](#)

**Background:** ERp19 and ERp46 are two newly discovered ER luminal proteins, related to protein disulphide isomerase. Western and Northern blot analyses have revealed that both ERp19 and ERp46 and their respective mRNAs are highly expressed in the liver as compared with other tissues. Both proteins are enriched in purified liver ER vesicles and were localized specifically to the ER in McA-RH7777 hepatocytes. See Knoblach et al. for details.

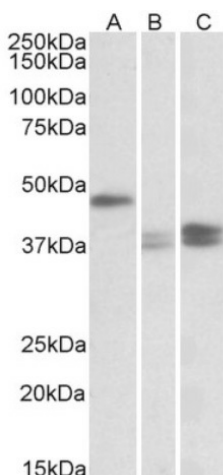
**Synonyms:** ERp46

**Protein Families:** Druggable Genome

**Product images:**



TXNDC5 antibody staining of Human Lymph Nodes lysate at 0.05 ug/ml (35 ug protein in RIPA buffer). Primary incubation was 1 hour. Detected by chemiluminescence.



TXNDC5 antibody staining of Mouse Lymph Nodes (A), Stomach (B) and Intestine (C) lysates at 0.1 ug/ml (35ug protein in RIPA buffer). Primary incubation was 1 hour. Detected by chemiluminescence.