

## Product datasheet for **AP23746PU-N**

### SH3 containing Grb 2 like 1 protein (SH3GL1) Goat Polyclonal Antibody

#### Product data:

Product Type:	Primary Antibodies
Applications:	ELISA, IHC, WB
Recommended Dilution:	<b>Peptide ELISA:</b> Detection Limit: 1/32000. <b>Western blot:</b> 0.3-1 µg/ml. Approx 48kDa band observed in lysates of cell line K562 (calculated MW of 41.5kDa according to NP_003016.1). <b>Immunohistochemistry on Paraffin Sections:</b> Human Small Intestine. 5 µg/ml.
Reactivity:	Bovine, Canine, Human
Host:	Goat
Clonality:	Polyclonal
Immunogen:	Peptide with sequence from the internal region of the protein sequence according to NP_003016.1.
Specificity:	Recognizes Endophilin-A2
Formulation:	Tris saline, pH 7.3 containing 0.02% Sodium Azide as preservative and 0.5% BSA as stabilizer. State: Aff - Purified State: Liquid purified Ig fraction.
Concentration:	lot specific
Purification:	Ammonium Sulphate Precipitation followed by antigen Affinity Chromatography using the immunizing peptide.
Conjugation:	Unconjugated
Storage:	Store the antibody undiluted at 2-8°C for one month or (in aliquots) at -20°C for longer. Avoid repeated freezing and thawing.
Stability:	Shelf life: one year from despatch.
Gene Name:	SH3 domain containing GRB2 like 1, endophilin A2
Database Link:	<a href="#">Entrez Gene 6455 Human Q99961</a>



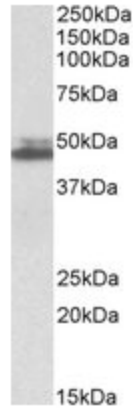
[View online »](#)

**Background:**

This gene encodes a member of the endophilin family of Src homology 3 domain-containing proteins. The encoded protein is involved in endocytosis and may also play a role in the cell cycle. Overexpression of this gene may play a role in leukemogenesis, and the encoded protein has been implicated in acute myeloid leukemia as a fusion partner of the myeloid-lymphoid leukemia protein. Pseudogenes of this gene are located on the long arm of chromosomes 11 and 17. Alternatively spliced transcript variants encoding multiple isoforms have been observed for this gene.

**Synonyms:**

Endophilin-2, SH3GL1, CNSA1, SH3D2B

**Product images:**

SH3GL1 antibody staining of K562 lysate at 0.3 ug/ml (35 ug protein in RIPA buffer). Primary incubation was 1 hour. Detected by chemiluminescence.