

Product datasheet for **AP23727PU-N**

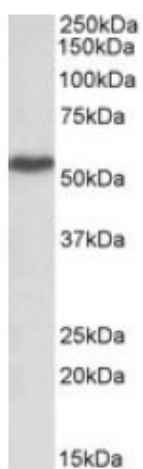
LSP1 (261-275) Goat Polyclonal Antibody

Product data:

Product Type:	Primary Antibodies
Applications:	ELISA, WB
Recommended Dilution:	Peptide ELISA: 1/16000. Western blot: Approx 55kDa band observed in Human Lymph Node, Tonsil and in Human Peripheral Blood Mononucleocytes lysates (calculated MW of 37.2kDa according to NP_002330.1). The observed molecular weight corresponds to earlier findings in literature with different antibodies (Liu et al, J Exp Med. 2005 Feb 7;201(3):409-18. PMID: 15684321). <u>Recommended concentration:</u> 1 - 3 µg/ml.
Reactivity:	Bovine, Canine, Human
Host:	Goat
Clonality:	Polyclonal
Immunogen:	Peptide with sequence C-ASTKSRWETGEVQAQ, from the internal region of the protein sequence according to NP_002330.1; NP_001013271.1.
Specificity:	This antibody reacts to Lymphocyte-specific protein 1 (LSP1).
Formulation:	Tris saline, pH7.3 containing 0.02% sodium azide as preservative and 0.5% bovine serum albumin as stabilizer State: Aff - Purified State: Liquid purified Ig fraction
Concentration:	lot specific
Purification:	Affinity chromatography
Conjugation:	Unconjugated
Storage:	Store the antibody undiluted at 2-8°C for one month or (in aliquots) at -20°C for longer. Avoid repeated freezing and thawing.
Stability:	Shelf life: one year from despatch.
Gene Name:	lymphocyte-specific protein 1
Database Link:	<u>Entrez Gene 4046 Human P33241</u>
Synonyms:	Lymphocyte-specific protein 1, Protein pp52



[View online »](#)

Product images:

Antibody (1ug/ml) staining of Peripheral Blood Lymphocytes lysate (35ug protein in RIPA buffer). Primary incubation was 1 hour. Detected by chemiluminescence.