

Product datasheet for **AP23724PU-N**

GLUD1 (+Glutamate dehydrogenase 2) Goat Polyclonal Antibody

Product data:

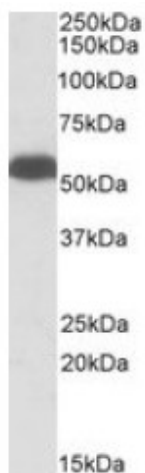
Product Type:	Primary Antibodies
Applications:	ELISA, IF, IHC, WB
Recommended Dilution:	Peptide ELISA: 1/32000 (Detection Limit). Western blot: 0.3-1 µg/ml. Approx 55kDa band observed in Human Brain (Cerebellum) and Mouse Brain lysates and in Human, Mouse and Rat Liver lysates (calculated MW of 61.4kDa according to Human NP_005262.1, of 61.3kDa according to Mouse NP_032159.1 and of 61.4kDa according to Rat NP_036702.1). Immunofluorescence: Customer found particulate cytoplasm staining in HeLa. Immunohistochemistry on Paraffin Sections: 3-5 µg/ml. In paraffin embedded Human Cerebral Cortex shows mitochondrial staining in neuronal cell bodies and axons.
Reactivity:	Bovine, Canine, Human, Mouse, Rat
Host:	Goat
Clonality:	Polyclonal
Immunogen:	Peptide with sequence from the internal region of the protein sequence according to NP_005262.1; NP_036216.2.
Specificity:	This antibody recognizes Glutamate Dehydrogenase. This antibody is expected to recognize both reported isoforms (NP_005262.1; NP_036216.2).
Formulation:	Tris saline, pH~7.3 State: Aff - Purified State: Liquid purified Ig fraction Stabilizer: 0.5% BSA Preservative: 0.02% Sodium Azide
Concentration:	lot specific
Purification:	Ammonium Sulphate Precipitation followed by Antigen Affinity Chromatography using the immunizing peptide
Conjugation:	Unconjugated
Storage:	Store undiluted at 2-8°C for one month or (in aliquots) at -20°C for longer. Avoid repeated freezing and thawing.
Stability:	Shelf life: one year from despatch.



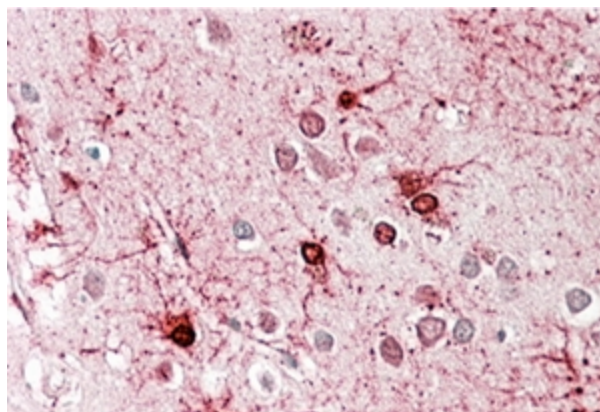
[View online »](#)

Gene Name:	glutamate dehydrogenase 1
Database Link:	Entrez Gene 14661 Mouse Entrez Gene 24399 Rat Entrez Gene 2746 Human P00367
Synonyms:	GLUD1, GLUD, GDH1
Protein Families:	Druggable Genome
Protein Pathways:	Alanine, aspartate and glutamate metabolism, Arginine and proline metabolism, D-Glutamine and D-glutamate metabolism, Metabolic pathways, Nitrogen metabolism

Product images:



(0.3 ug/ml) staining of Mouse Liver lysate (35ug protein in RIPA buffer). Primary incubation was 1 hour. Detected by chemiluminescence.



(3.8 ug/ml) staining of paraffin embedded Human Cerebral Cortex. Steamed antigen retrieval with citrate buffer pH 6, AP-staining.