

## Product datasheet for **AP23720PU-N**

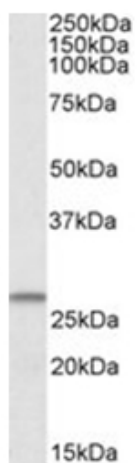
### CHCHD3 Goat Polyclonal Antibody

#### Product data:

Product Type:	Primary Antibodies
Applications:	ELISA, WB
Recommended Dilution:	<b>Peptide ELISA:</b> Detection Limit: 1/16000. <b>Western blot:</b> 1-3 µg/ml. Detects a band of Approx 26kDa in Human Brain (Cerebellum) and Heart lysates (calculated MW of 26.2kDa according to NP_060282.1). Anonymous customer finds ~30kDa in THP1 and in Human primary monocyte derived dendritic cells.
Reactivity:	Bovine, Canine, Human, Rat, Sheep
Host:	Goat
Clonality:	Polyclonal
Immunogen:	Peptide with sequence from the internal region of the protein sequence according to NP_060282.1.
Specificity:	Recognizes CHCHD3.
Formulation:	Tris saline, pH 7.3 containing 0.02% Sodium Azide as preservative and 0.5% BSA as stabilizer State: Aff - Purified State: Liquid purified IgG fraction.
Concentration:	lot specific
Purification:	Ammonium Sulphate Precipitation followed by Antigen Affinity Chromatography using the immunizing peptide.
Conjugation:	Unconjugated
Storage:	Store the antibody undiluted at 2-8°C for one month or (in aliquots) at -20°C for longer. Avoid repeated freezing and thawing.
Stability:	Shelf life: one year from despatch.
Gene Name:	coiled-coil-helix-coiled-coil-helix domain containing 3
Database Link:	<a href="#">Entrez Gene 54927 Human Q9NX63</a>
Synonyms:	FLJ20420



[View online »](#)

**Product images:**

CHCHD3 antibody staining of Human Heart lysate at 1 ug/ml (35ug protein in RIPA buffer). Primary incubation was 1 hour. Detected by chemiluminescence.