

Product datasheet for **AP23702PU-N**

B7-1 (CD80) Goat Polyclonal Antibody

Product data:

Product Type:	Primary Antibodies
Applications:	ELISA, WB
Recommended Dilution:	Peptide ELISA: Detection Limit: 1/4000. Western blot: 0.3-1 µg/ml. Detects a band of Approx 60kDa band observed in Human Lymph Node and Human Tonsil lysates (calculated MW of 33.0kDa according to NP_005182.1). The observed molecular weight corresponds to earlier findings with different antibodies from other commercial sources.
Reactivity:	Human
Host:	Goat
Clonality:	Polyclonal
Immunogen:	Peptide with sequence from the internal region of the protein sequence according to NP_005182.1.
Specificity:	Recognizes CD80.
Formulation:	Tris saline, pH 7.3 containing 0.02% Sodium Azide as preservative and 0.5% BSA as stabilizer. State: Aff - Purified State: Liquid purified IgG fraction.
Concentration:	lot specific
Purification:	Ammonium Sulphate Precipitation followed by Antigen Affinity Chromatography using the immunizing peptide.
Conjugation:	Unconjugated
Storage:	Store the antibody undiluted at 2-8°C for one month or (in aliquots) at -20°C for longer. Avoid repeated freezing and thawing.
Stability:	Shelf life: one year from despatch.
Gene Name:	CD80 molecule
Database Link:	Entrez Gene 941 Human P33681



[View online »](#)

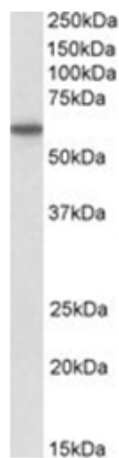
Background:

CD80 is a member of the Ig superfamily and serves as the ligand for two T cell molecules, CD28 and CTLA4. Interactions between CD28 and CD80 on activated B cells result in enhanced T cell activation. CD80 is rapidly induced on the surface of in vitro activated B cells, Epstein Barr Virus (EBV) transformed B cell lines, Burkitts lymphoma cell lines, freshly isolated follicular B lymphoma cells, T cells, and monocytes. It is also expressed at high levels in dendritic cells. It reacts weakly with a small proportion of non activated normal B cells and with HTLV1 infected T cells. CD80 does not react with peripheral monocytes, resting and activated normal T cells, T cell lines and T cell clones, nor with myelomonocytic cell lines.

Cell Distribution: CD80 is rapidly induced on the surface of activated B cells, T cells and monocytes and is also expressed at high levels on dendritic cells.

Synonyms:

CD28LG, CD28LG1, LAB7, BB1, B7.1, B7-1

Product images:

CD80 antibody staining of Human Node lysate at 1 ug/ml (35ug protein in RIPA buffer). Primary incubation was 1 hour. Detected by chemiluminescence.