

Product datasheet for **AP23696PU-N**

SATB1 Goat Polyclonal Antibody

Product data:

Product Type:	Primary Antibodies
Applications:	ELISA, IHC, WB
Recommended Dilution:	Peptide ELISA: 1/32000 (Detection Limit). Western Blot: 0.3-1 µg/ml. Experiments gave bands at approx. 110kDa and 85kDa in lysates of cell line MOLT4 after 0.3 µg/ml antibody staining. The observed 110kDa band corresponds to earlier findings in literature with different antibodies (De Belle et al, J Cell Biol. 1998 Apr 20;141(2):335-48.; PMID: 9548713). This protein has a calculated MW of 86.0kDa according to NP_002962.1. Immunohistochemistry on Paraffin Sections: 3-5 µg/ml. In paraffin embedded Human Thymus shows select nuclear staining.
Reactivity:	Bovine, Human, Mouse, Rat
Host:	Goat
Clonality:	Polyclonal
Immunogen:	Peptide sequence from the internal region of Human SATB1 (NP_002962.1).
Specificity:	This antibody recognizes SATB1.
Formulation:	Tris saline, pH~7.3 State: Aff - Purified State: Liquid purified IgG fraction Stabilizer: 0.5% BSA Preservative: 0.02% Sodium Azide
Concentration:	lot specific
Purification:	Ammonium Sulphate Precipitation followed by Antigen Affinity Chromatography using the immunizing peptide
Conjugation:	Unconjugated
Storage:	Store undiluted at 2-8°C for one month or (in aliquots) at -20°C for longer. Avoid repeated freezing and thawing.
Stability:	Shelf life: one year from despatch.
Gene Name:	SATB homeobox 1

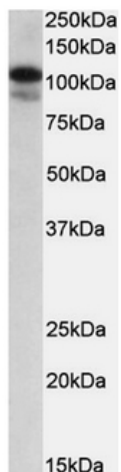


[View online »](#)

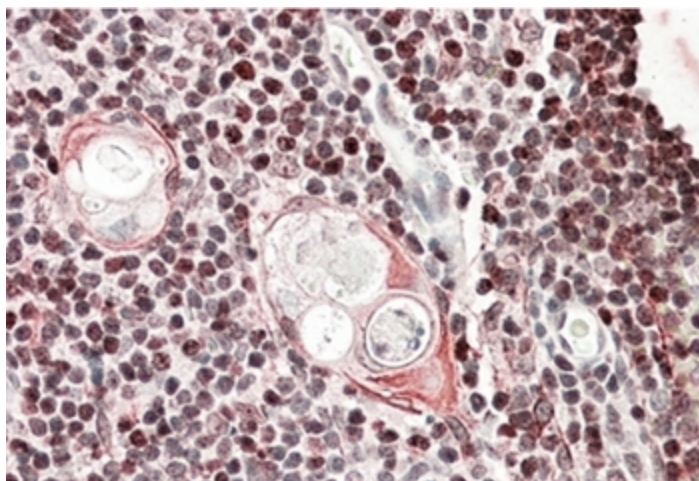
Database Link: [Entrez Gene 6304 Human Q01826](#)

Synonyms: SATB1

Product images:



SATB1 Antibody staining of MOLT4 lysate at 0.3 ug/ml (35 ug protein in RIPA buffer). Primary incubation was 1 hour. Detected by chemiluminescence.



SATB1 Antibody staining of of paraffin embedded Human Thymus at 3.8 ug/ml. Steamed antigen retrieval with citrate buffer pH 6, AP-staining.