

Product datasheet for **AP23681PU-N**

Cytochrome P450 26B (CYP26B1) (160-396) Rabbit Polyclonal Antibody

Product data:

Product Type:	Primary Antibodies
Applications:	IHC, WB
Recommended Dilution:	Immunohistochemistry on Paraffin Sections: 10 µg/ml. Western Blot: 1/500 - 1/3000.
Reactivity:	Human, Mouse, Rat
Host:	Rabbit
Clonality:	Polyclonal
Immunogen:	Recombinant protein fragment containing a sequence corresponding to a region within amino acids 160 and 396 of Human Cytochrome P450 26B
Specificity:	This antibody recognizes CYP26B1 at aa160-396.
Formulation:	0.1M Tris-glycine, pH 7, 20% Glycerol and 0.01% Thimerosal State: Aff - Purified State: Liquid purified IgG fraction
Concentration:	lot specific
Purification:	Immunoaffinity Chromatography
Conjugation:	Unconjugated
Storage:	Store the antibody undiluted (in aliquots) at -20°C. Avoid repeated freezing and thawing.
Stability:	Shelf life: one year from despatch.
Gene Name:	cytochrome P450 family 26 subfamily B member 1
Database Link:	Entrez Gene 232174 Mouse Entrez Gene 312495 Rat Entrez Gene 56603 Human Q9NR63
Background:	Involved in the metabolism of retinoic acid (RA), rendering this classical morphogen inactive through oxidation. Involved in the specific inactivation of all-trans-retinoic acid (all-trans-RA), with a preference for the following substrates: all-trans-RA > 9-cis-RA > 13-cis-RA. Generates several hydroxylated forms of RA, including 4-OH-RA, 4-oxo-RA, and 18-OH-RA. Essential for postnatal survival.
Synonyms:	CYP26A2, Cytochrome P450RAI2, Cytochrome P450 26B1, Cytochrome P450 26A2

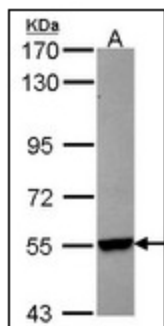


[View online »](#)

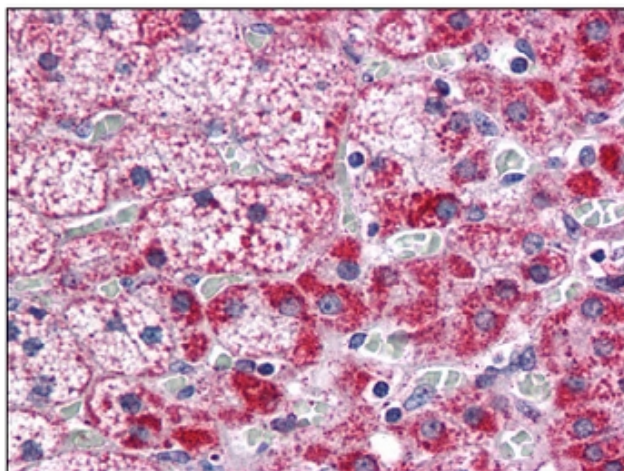
Protein Families: Druggable Genome, P450

Protein Pathways: Retinol metabolism

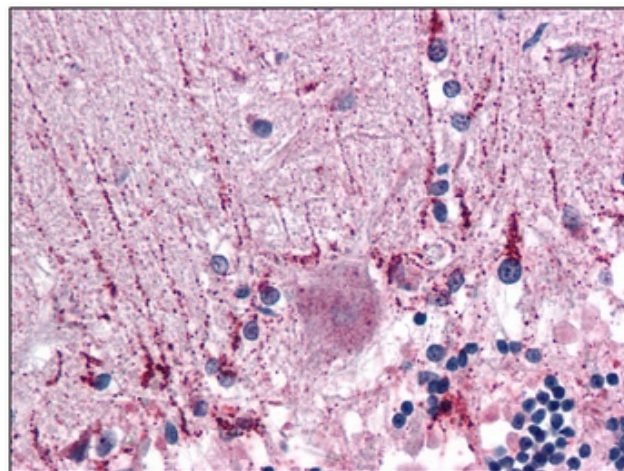
Product images:



Sample (30 ug of whole cell lysate). Lane A: Hep G2. 7.5% SDS PAGE. CYP26B1 antibody diluted at 1/1000.



Human Adrenal: Formalin-Fixed, Paraffin-Embedded (FFPE)



Human Brain, Cerebellum: Formalin-Fixed, Paraffin-Embedded (FFPE)