

## Product datasheet for **AP23680PU-N**

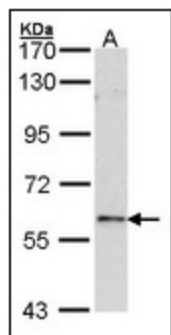
### FOXN1 Rabbit Polyclonal Antibody

#### Product data:

Product Type:	Primary Antibodies
Applications:	IHC, WB
Recommended Dilution:	<b>Immunohistochemistry on Paraffin Sections:</b> 10 µg/ml. <b>Western Blot:</b> 1/500 - 1/3000.
Reactivity:	Human
Host:	Rabbit
Clonality:	Polyclonal
Immunogen:	Synthetic peptide - KLH conjugated corresponding to Human Forkhead box N1.
Specificity:	Recognizes Human Forkhead box N1.
Formulation:	PBS, pH 7, 10% Glycerol, 0.01% Thimerosal State: Liquid purified IgG fraction.
Concentration:	lot specific
Purification:	Immunoaffinity Chromatography
Conjugation:	Unconjugated
Storage:	Store the antibody undiluted (in aliquots) at -20°C. Avoid repeated freezing and thawing.
Stability:	Shelf life: one year from despatch.
Gene Name:	forkhead box N1
Database Link:	<a href="#">Entrez Gene 8456 Human O15353</a>
Synonyms:	RONU, WHN
Protein Families:	Druggable Genome, Transcription Factors



[View online »](#)

**Product images:**

Sample (30 ug of whole cell lysate). A: Raji. 7.5% SDS PAGE. FOXN1 antibody diluted at 1:1000.



Human Uterus: Formalin-Fixed, Paraffin-Embedded (FFPE)