

## Product datasheet for **AP23675PU-N**

### Lgals1 (N-term) Goat Polyclonal Antibody

#### Product data:

Product Type:	Primary Antibodies
Applications:	ELISA, WB
Recommended Dilution:	<b>Peptide ELISA:</b> Detection Limit: 1/8000. <b>Western Blot:</b> 0.1-0.3 µg/ml. Approx 15kDa band observed in lysates of Mouse and Rat Pancreas and of cell line NIH3T3.
Reactivity:	Bovine, Human, Mouse, Porcine, Rat
Host:	Goat
Clonality:	Polyclonal
Immunogen:	Peptide with sequence from the N-Terminus (near) of the protein sequence according to NP_032521.1.
Specificity:	Recognizes Mouse Galectin-1 (N-term).
Formulation:	Tris saline, pH 7.3 containing 0.02% Sodium Azide as preservative and 0.5% BSA as stabilizer. State: Aff - Purified State: Liquid purified IgG fraction.
Concentration:	lot specific
Purification:	Ammonium Sulphate Precipitation followed by antigen Affinity Chromatography using the immunizing peptide.
Conjugation:	Unconjugated
Storage:	Store the antibody undiluted at 2-8°C for one month or (in aliquots) at -20°C for longer. Avoid repeated freezing and thawing.
Stability:	Shelf life: one year from despatch.
Gene Name:	lectin, galactose binding, soluble 1
Database Link:	<a href="#">Entrez Gene 16852 Mouse P16045</a>



[View online »](#)

**Background:**

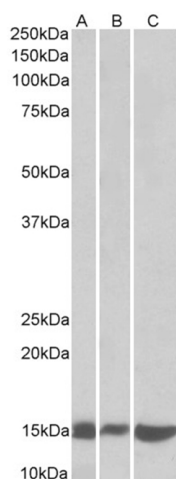
Galectin-1 is a member of the beta-galactoside-binding proteins implicated in modulating cell-cell and cell-matrix interactions. This protein is an autocrine negative growth factor that regulates cell proliferation. It controls cell survival by inducing apoptosis of activated T cells and immature thymocytes, thus Galectin-1 has immunosuppressive and anti-inflammatory properties. Galectin-1 also regulates tumor angiogenesis and is a target for angiostatic cancer therapy.

**Synonyms:**

LGALS1, Galectin1, Lectin galactoside-binding soluble 1, Beta-galactoside-binding lectin L-14-I, Lactose-binding lectin 1, S-Lac lectin 1, Galaptin, 14 kDa lectin, HPL, HBL, MAPK-activating protein PM12

**Note:**

Calculated Molecular Weight: 14.9kDa (NP\_032521.1).

**Product images:**

Galectin-1 antibody staining of Mouse (A) and Rat (B) Pancreas lysates and NIH3T3 (C) lysate (35ug protein in RIPA buffer). Primary incubation was 1 hour. Detected by chemiluminescence.