

Product datasheet for **AP23663PU-N**

IRF2BP1 (461-474) Goat Polyclonal Antibody

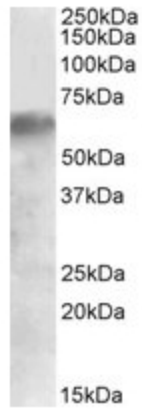
Product data:

Product Type:	Primary Antibodies
Applications:	ELISA, WB
Recommended Dilution:	Peptide ELISA: Detection Limit: 1/16000. Western Blot: 0.3-1.0 µg/ml. Approx 60kDa band observed in Human Liver lysates. An Approx 85kDa band observed in nuclear lysates of cell line NIH3T3 and 75kDa in Mouse and Rat Colion lysates. The observed molecular weights correspond to earlier findings with different antibodies from other commercial sources.
Reactivity:	Bovine, Canine, Human, Mouse, Porcine, Rat
Host:	Goat
Clonality:	Polyclonal
Immunogen:	Peptide with sequence from the internal region of the protein sequence according to NP_056464.1.
Specificity:	Recognizes IRF2BP1 (461-474).
Formulation:	Tris saline, pH 7.3 containing 0.02% Sodium Azide as preservative and 0.5% BSA as stabilizer. State: Aff - Purified State: Liquid purified IgG fraction.
Concentration:	lot specific
Purification:	Ammonium Sulphate Precipitation followed by antigen Affinity Chromatography using the immunizing peptide.
Conjugation:	Unconjugated
Storage:	Store the antibody undiluted at 2-8°C for one month or (in aliquots) at -20°C for longer. Avoid repeated freezing and thawing.
Stability:	Shelf life: one year from despatch.
Gene Name:	interferon regulatory factor 2 binding protein 1
Database Link:	Entrez Gene 26145 Human Q8IU81
Synonyms:	IRF-2-binding protein 1, IRF-2BP1
Note:	Calculated Molecular Weight: 61.7kDa (NP_056464.1).

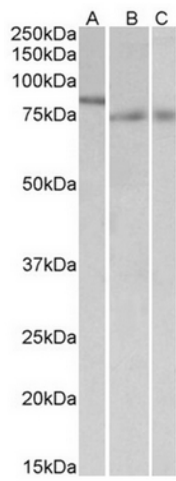


[View online »](#)

Product images:



IRF2BP1 antibody staining of Human Liver lysate at 0.5 ug/ml (35ug protein in RIPA buffer). Primary incubation was 1 hour. Detected by chemiluminescence.



IRF2BP1 antibody staining of nuclear NIH3T3 lysate (A) and of Mouse (B) and Rat (C) Colon lysates at 1ug/ml (35ug protein in RIPA buffer). Primary incubation was 1 hour. Detected by chemiluminescence.