

Product datasheet for **AP23656PU-N**

PPPDE1 (DES12) Goat Polyclonal Antibody

Product data:

Product Type:	Primary Antibodies
Applications:	ELISA, IHC, WB
Recommended Dilution:	Peptide ELISA: 1/32000 (Detection Limit). Western Blot: 0.5-1 µg/ml. In transfected HEK293 transiently expressing full-length Human PPPDE1 (myc and <i>DYKDDDDK</i> tagged), a band of approx. 30kDa was observed. No bands were observed in mock-transfected HEK293 and the same band was observed using anti-myc tag antibody. Immunohistochemistry on Paraffin Sections: 10 µg/ml in Paraffin embedded Human Skin. Purchase the +ve control! The transfected lysate used to QC this product is available for sale.
Reactivity:	Bovine, Canine, Human, Mouse, Porcine, Rat
Host:	Goat
Clonality:	Polyclonal
Immunogen:	Peptide with sequence from the internal region of the protein sequence according to NP_057160.2.
Specificity:	Recognizes PPPDE1 / PNAS4.
Formulation:	Tris saline, pH~7.3 State: Aff - Purified State: Liquid purified IgG fraction Stabilizer: 0.5% BSA Preservative: 0.02% Sodium Azide
Concentration:	lot specific
Purification:	Ammonium Sulphate Precipitation followed by antigen Affinity Chromatography using the immunizing peptide
Conjugation:	Unconjugated
Storage:	Store undiluted at 2-8°C for one month or (in aliquots) at -20°C for longer. Avoid repeated freezing and thawing.
Stability:	Shelf life: one year from despatch.
Gene Name:	desumoylating isopeptidase 2



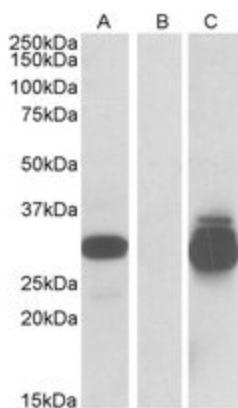
[View online »](#)

Database Link: [Entrez Gene 51029 Human Q9BSY9](#)

Synonyms: C1orf121, FAM152A, CGI-146, PNAS-4, PNAS4

Note: The positive Control is also available

Product images:



HEK293 lysate (10 ug protein in RIPA buffer) overexpressing Human PPPDE1 with C-terminal MYC tag probed with (0.5 ug/ml) in Lane A and probed with anti-MYC Tag (1/5000) in lane C. Mock-transfected HEK293 probed with (1 mg/ml) in Lane B. Primary incubations were for 1 hour. Detected by chemiluminescence