

Product datasheet for **AP23655PU-N**

EPM2AIP1 Goat Polyclonal Antibody

Product data:

Product Type:	Primary Antibodies
Applications:	ELISA, IHC, WB
Recommended Dilution:	Peptide ELISA: 1/8000 (Detection Limit). Western Blot: 1-2 µg/ml. In transfected HEK293 transiently expressing full-length Human EPM2AIP1 (myc and DYKDDDDK tagged), a band of approx. 70kDa was observed. No bands were observed in mock-transfected HEK293 and the same band was observed using anti-DYKDDDDK tag antibody. Immunohistochemistry on Paraffin Sections: 5-10 µg/ml. In paraffin embedded Human Heart shows regular staining of sarcoplasmic reticulum in the cardiac fibers.
Reactivity:	Canine, Human, Mouse, Rat
Host:	Goat
Clonality:	Polyclonal
Immunogen:	Peptide with sequence from the internal region (near C Terminus) of the protein sequence according to NP_055620.1.
Specificity:	Recognizes EPM2AIP1.
Formulation:	Tris saline, pH~7.3 State: Aff - Purified State: Liquid purified IgG fraction Stabilizer: 0.5% BSA Preservative: 0.02% Sodium Azide
Concentration:	lot specific
Purification:	Ammonium Sulphate Precipitation followed by antigen Affinity Chromatography using the immunizing peptide
Conjugation:	Unconjugated
Storage:	Store undiluted at 2-8°C for one month or (in aliquots) at -20°C for longer. Avoid repeated freezing and thawing.
Stability:	Shelf life: one year from despatch.
Gene Name:	EPM2A (laforin) interacting protein 1



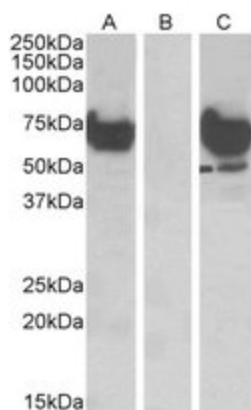
[View online »](#)

Database Link: [Entrez Gene 9852 Human Q7L775](#)

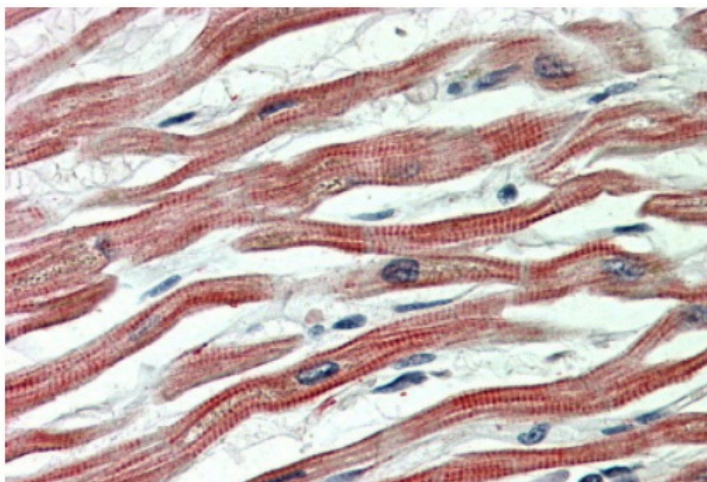
Synonyms: EPM2AIP1, KIAA0766, My007, EPM2A-interacting protein 1, Laforin-interacting protein

Note: Purchase the Positive Control! The transfected lysate used to QC this product is available.

Product images:



HEK293 lysate (10 ug protein in RIPA buffer) overexpressing Human EPM2AIP1 with DYKDDDDK tag probed with EPM2AIP1 Antibody (1 ug/ml) in Lane A and probed with anti-DYKDDDDK Tag (1/1000) in lane C. Mock-transfected HEK293 probed with (1 mg/ml) in Lane B. Primary incubations were for 1 hour. Detected by chemiluminescence.



Staining of paraffin embedded Human Heart using EPM2AIP1 Antibody at 5 ug/ml. Steamed antigen retrieval with citrate buffer pH 6, AP-staining.