

## Product datasheet for **AP23652PU-N**

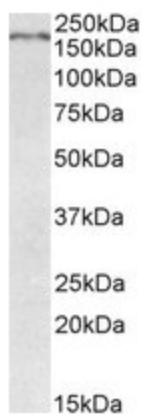
### Robo1 Goat Polyclonal Antibody

#### Product data:

Product Type:	Primary Antibodies
Applications:	ELISA, WB
Recommend Dilution:	<b>Peptide ELISA:</b> Detection Limit: 1/128000. <b>Western Blot:</b> 0.05-0.2 µg/ml. Approx 200kDa band observed in fetal Mouse Brain lysates.
Reactivity:	Canine, Mouse, Rat
Host:	Goat
Clonality:	Polyclonal
Immunogen:	Peptide with sequence from the internal region of the protein sequence according to NP_062286.2.
Specificity:	Recognizes Robo1 / DUTT1
Formulation:	Tris saline, pH 7.3 containing 0.02% Sodium Azide as preservative and 0.5% BSA as stabilizer. State: Aff - Purified State: Liquid purified IgG fraction.
Concentration:	lot specific
Purification:	Ammonium Sulphate Precipitation followed by antigen Affinity Chromatography using the immunizing peptide.
Storage:	Store the antibody undiluted at 2-8°C for one month or (in aliquots) at -20°C for longer. Avoid repeated freezing and thawing.
Stability:	Shelf life: one year from despatch.
Database Link:	<a href="#">Entrez Gene 19876 Mouse</a>
Synonyms:	ROBO-1, Roundabout homolog 1, DUTT1
Note:	Calculated Molecular Weight: 176kDa (NP_062286.2).



[View online »](#)

**Product images:**

DUTT1 antibody staining of fetal Mouse Brain lysate at 0.05 ug/ml (35 ug protein in RIPA buffer). Primary incubation was 1 hour. Detected by chemiluminescence.