

Product datasheet for **AP23651PU-N**

STAP2 (436-449) Goat Polyclonal Antibody

Product data:

Product Type:	Primary Antibodies
Applications:	ELISA, IHC, WB
Recommended Dilution:	ELISA: 1/16000. Immunohistochemistry on Paraffin Sections: 3.75 µg/ml. Western Blot: 1/16000, 0.05 - 0.3 µg/ml.
Reactivity:	Human, Monkey
Host:	Goat
Clonality:	Polyclonal
Immunogen:	Synthetic peptide from C-term of human STAP2
Specificity:	This antibody reacts to the C-term of Signal-transducing Adaptor Protein-2 (STAP2) at aa 436-449. It is expected to recognise isoforms 1 (NP_060190.2) and isoform 2 (NP_001013863.1).
Formulation:	Tris saline buffer, pH 7.3 containing 0.5% BSA as stabilizer and 0.02% sodium azide as preservative State: Aff - Purified State: Liquid purified Ig fraction
Concentration:	lot specific
Purification:	Immunoaffinity Chromatography
Conjugation:	Unconjugated
Storage:	Store the antibody at -20°C. Avoid repeated freezing and thawing.
Stability:	Shelf life: one year from despatch.
Gene Name:	signal transducing adaptor family member 2
Database Link:	Entrez Gene 55620 Human Q9UGK3



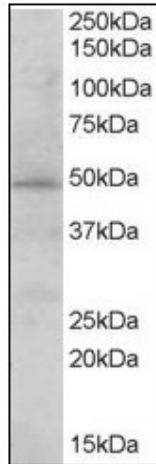
[View online »](#)

Background:

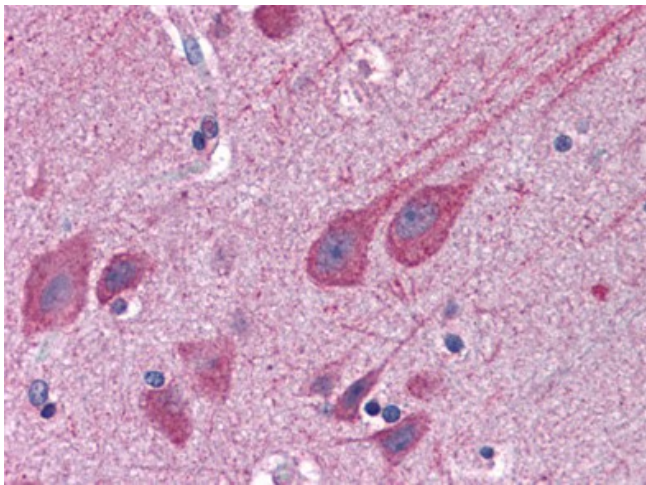
STAP2 is the substrate of breast tumor kinase, an Src-type non-receptor tyrosine kinase. The encoded protein possesses domains and several tyrosine phosphorylation sites characteristic of adaptor proteins that mediate the interactions linking proteins involved in signal transduction pathways. Alternative splicing results in multiple transcript variants.

Synonyms:

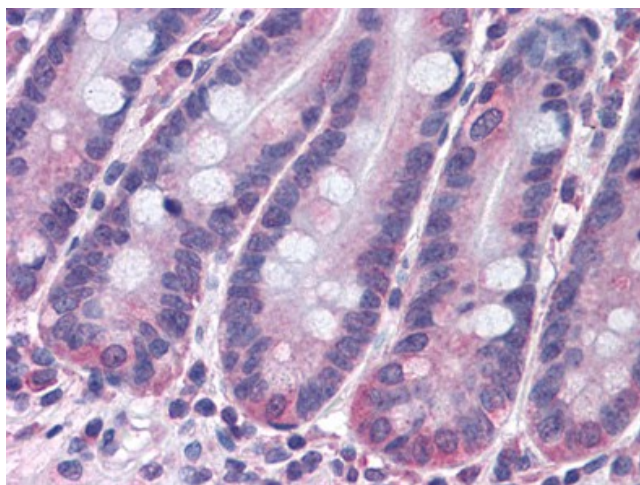
STAP-2, BRK substrate

Product images:


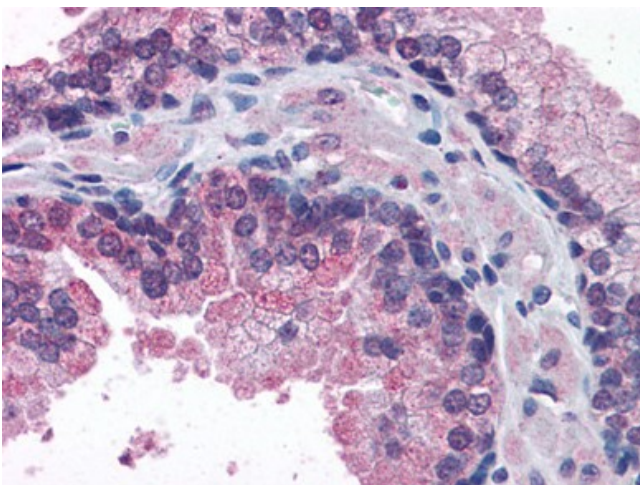
Antibody (0.03 ug/ml) staining of human heart lysate (35 ug protein in RIPA buffer). Primary incubation was 1 hour. Detected by chemiluminescence.



Human Brain, Cortex: Formalin-Fixed, Paraffin-Embedded (FFPE)



Human Small Intestine: Formalin-Fixed, Paraffin-Embedded (FFPE)



Human Prostate: Formalin-Fixed, Paraffin-Embedded (FFPE)