

## Product datasheet for **AP23650PU-N**

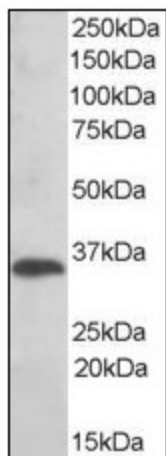
### **TXNDC (TMX1) (269-280) Goat Polyclonal Antibody**

#### Product data:

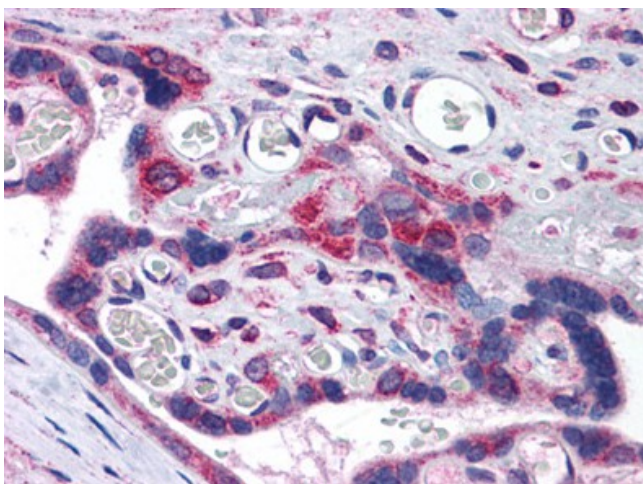
Product Type:	Primary Antibodies
Applications:	ELISA, IHC, WB
Recommended Dilution:	<b>ELISA:</b> 1/64000. <b>Immunohistochemistry on Paraffin Sections:</b> 3.75 µg/ml. <b>Western Blot:</b> 1/64000, 0.01 - 0.03 µg/ml.
Reactivity:	Human
Host:	Goat
Clonality:	Polyclonal
Immunogen:	Synthetic peptide from (C-term) of human TXNDC1
Specificity:	This antibody reacts to Thioredoxin-related Transmembrane Protein (TMX) (TXNDC1) at aa269-280.
Formulation:	Tris saline buffer, pH 7.3 containing 0.5% BSA as stabilizer and 0.02% sodium azide as preservative State: Aff - Purified State: Liquid purified Ig fraction
Concentration:	lot specific
Purification:	Immunoaffinity Chromatography
Conjugation:	Unconjugated
Storage:	Store the antibody at -20°C. Avoid repeated freezing and thawing.
Stability:	Shelf life: one year from despatch.
Gene Name:	thioredoxin related transmembrane protein 1
Database Link:	<a href="#">Entrez Gene 81542 Human Q9H3N1</a>
Background:	May participate in various redox reactions through the reversible oxidation of its active center dithiol to a disulfide and catalyze dithiol-disulfide exchange reactions.
Synonyms:	TMX, TXNDC
Protein Families:	Druggable Genome, Transcription Factors, Transmembrane



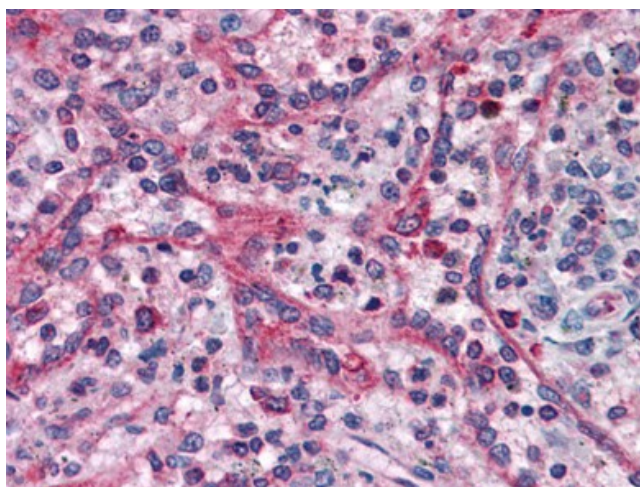
[View online »](#)

**Product images:**

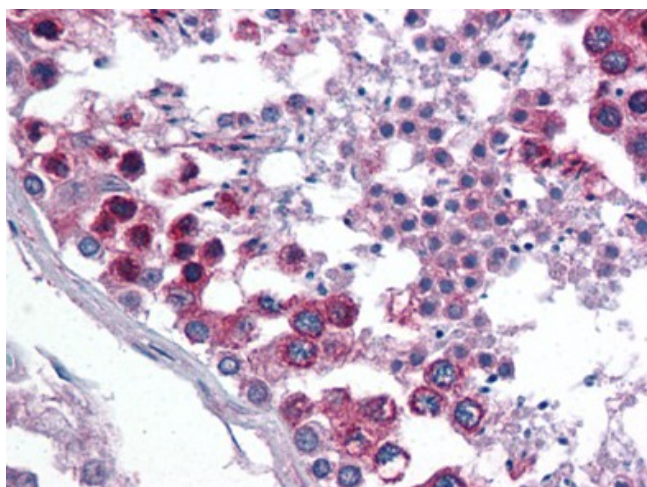
Antibody (0.01 ug/ml) staining of human liver lysate (35 ug protein in RIPA buffer). Primary incubation was 1 hour. Detected by chemiluminescence.



Human Placenta: Formalin-Fixed, Paraffin-Embedded (FFPE)



Human Spleen: Formalin-Fixed, Paraffin-Embedded (FFPE)



Human Testis: Formalin-Fixed, Paraffin-Embedded (FFPE)