

Product datasheet for **AP23649PU-N**

EML2 (C-term) Goat Polyclonal Antibody

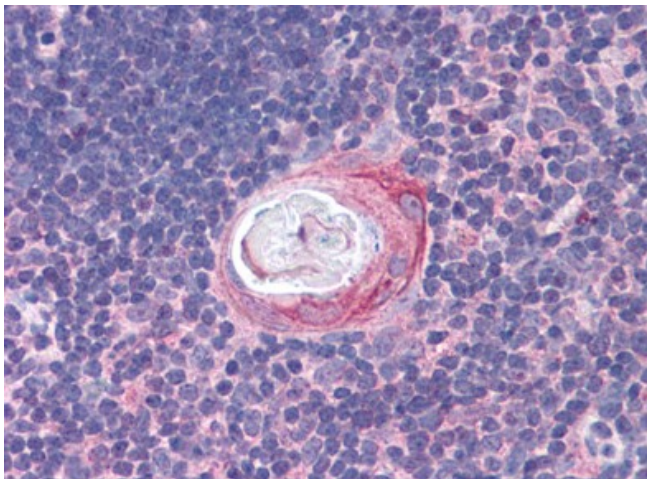
Product data:

Product Type:	Primary Antibodies
Applications:	ELISA, IHC
Recommended Dilution:	ELISA: 1/16000. Immunohistochemistry on Paraffin Sections: 3.75 µg/ml.
Reactivity:	Human, Bovine, Canine, Equine, Hamster, Rabbit
Host:	Goat
Clonality:	Polyclonal
Immunogen:	Synthetic peptid from C-terminus of human EML2
Specificity:	This antibody reacts to the C-term of Microtubule-associated Protein Like Echinoderm Emap (EMAP-2) (EML2).
Formulation:	Tris saline buffer, pH 7.3 containing 0.5% BSA as stabilizer and 0.02% sodium azide as preservative State: Aff - Purified State: Liquid purified Ig fraction
Concentration:	lot specific
Purification:	Immunoaffinity Chromatography
Conjugation:	Unconjugated
Storage:	Store the antibody at -20°C. Avoid repeated freezing and thawing.
Stability:	Shelf life: one year from despatch.
Gene Name:	echinoderm microtubule associated protein like 2
Database Link:	Entrez Gene 24139 Human O95834
Background:	Tubulin binding protein that inhibits microtubule nucleation and growth, resulting in shorter microtubules.
Synonyms:	EMAPL2, EMAP-2
Protein Families:	Transmembrane

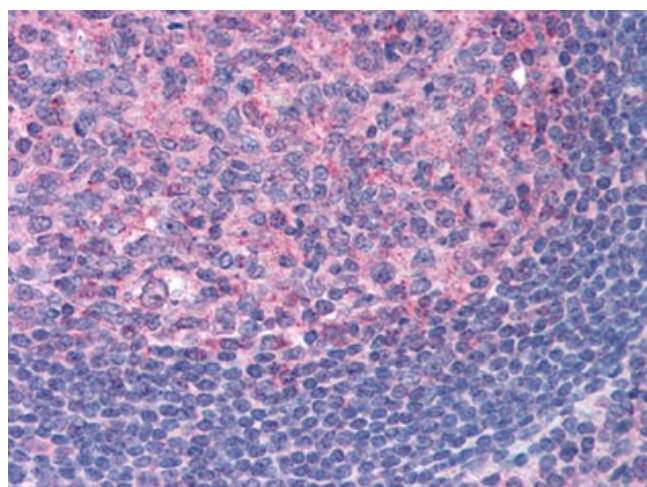


[View online »](#)

Product images:



Human Thymus: Formalin-Fixed, Paraffin-Embedded (FFPE)



Human Tonsil: Formalin-Fixed, Paraffin-Embedded (FFPE)