

Product datasheet for **AP23647PU-N**

FSH Receptor (FSHR) Rabbit Polyclonal Antibody

Product data:

Product Type:	Primary Antibodies
Applications:	ELISA, IF, IHC
Recommended Dilution:	ELISA: 1/1000. Immunofluorescence: 1/100 - 1/500. Immunohistochemistry on Paraffin Sections: 1/100.
Reactivity:	Human
Host:	Rabbit
Isotype:	IgG
Clonality:	Polyclonal
Immunogen:	Synthetic peptide from Human FSHR. (aa278-327) Epitope: Internal
Specificity:	This antibody detects endogenous levels of total FSHR protein.
Formulation:	PBS (without Mg ²⁺ , Ca ²⁺), pH 7.4 containing 150 mM Sodium Chloride, 0.02% Sodium Azide and 50% Glycerol State: Liquid purified Ig fraction
Concentration:	lot specific
Purification:	Immunoaffinity Chromatography
Conjugation:	Unconjugated
Storage:	Store the antibody at -20°C. Avoid repeated freezing and thawing.
Stability:	Shelf life: one year from despatch.
Gene Name:	follicle stimulating hormone receptor
Database Link:	Entrez Gene 2492 Human P23945



[View online »](#)

Background:

FSHR, a Glycoprotein Hormone Receptor, is required for normal ovarian development and follicle maturation in females. When activated, it stimulates ovarian follicular growth and production of estrogens, initiating a normal menstrual cycle. In males, FSHR is required for the initiation of spermatogenesis and normal sperm production. Two isoforms are produced by alternative splicing.

Immunogenic peptide has only 57% homology with the corresponding region in mouse and is located in the extracellular domain of the protein.

Synonyms:

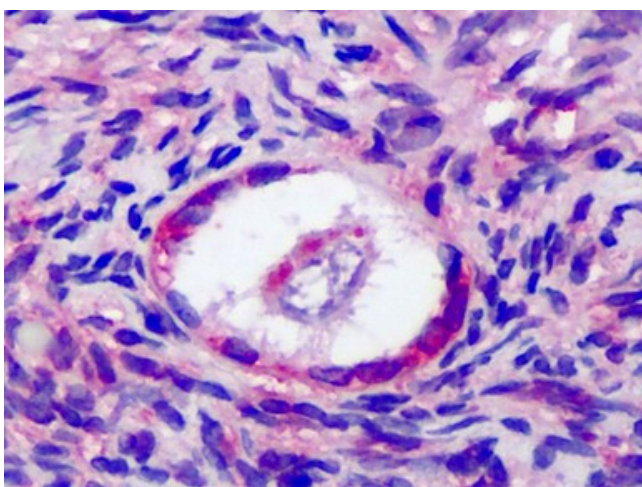
Follicle-stimulating hormone receptor, FSH-R, LGR1, Follitropin receptor

Protein Families:

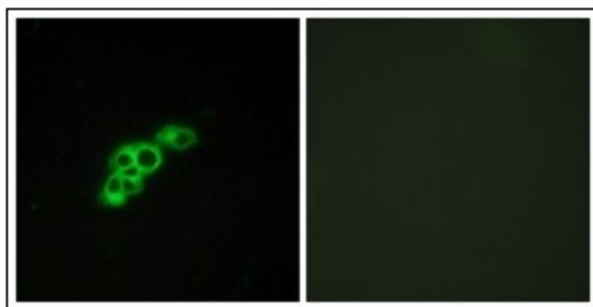
Druggable Genome, ES Cell Differentiation/IPS, GPCR, Transmembrane

Protein Pathways:

Neuroactive ligand-receptor interaction

Product images:

Human Ovary: Formalin-Fixed, Paraffin-Embedded (FFPE)



Immunofluorescence analysis of MCF7 cells, using FSHR Antibody. The picture on the right is treated with the synthesized peptide.