

## Product datasheet for **AP23646PU-N**

### **ACKR3 (311-360) Rabbit Polyclonal Antibody**

#### **Product data:**

Product Type:	Primary Antibodies
Applications:	ELISA, IF, IHC, WB
Recommended Dilution:	<b>ELISA:</b> 1/1000. <b>Immunofluorescence:</b> 1/100 - 1/500. <b>Immunohistochemistry on Paraffin Sections:</b> 1/100. <b>Western Blot:</b> 1/500 - 1/1000.
Reactivity:	Human, Mouse, Rat
Host:	Rabbit
Isotype:	IgG
Clonality:	Polyclonal
Immunogen:	Synthetic peptide from human CXCR7 (aa311-360)
Specificity:	This antibody reacts to G Protein-Coupled Receptor RDC1 (CXCR7).
Formulation:	PBS (without Mg <sup>2+</sup> , Ca <sup>2+</sup> ), pH 7.4 containing 150 mM sodium chloride, 0.02% sodium azide as preservative and 50% glycerol as stabilizer State: Aff - Purified State: Liquid purified Ig fraction
Purification:	Immunoaffinity Chromatography
Conjugation:	Unconjugated
Storage:	Store the antibody at -20°C. Avoid repeated freezing and thawing.
Stability:	Shelf life: one year from despatch.
Gene Name:	atypical chemokine receptor 3
Database Link:	<a href="#">Entrez Gene 12778 Mouse</a> <a href="#">Entrez Gene 84348 Rat</a> <a href="#">Entrez Gene 57007 Human P25106</a>



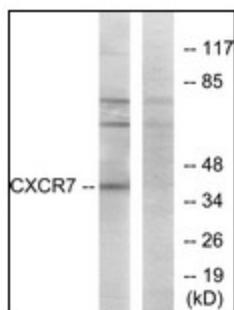
[View online »](#)

**Background:** RDC1 was originally considered to be an Adrenomedullin receptor that binds calcitonin gene-related peptide (CGRP) and adrenomedullin. RDC1 and GPRN1 represent two tissue-specific subtypes of the same 60-kD receptor. RDC1 has the structural characteristics of a chemokine receptor. Recently it has been shown that RDC1 binds to the chemokine CXCL12 and should be considered to be a chemokine receptor.

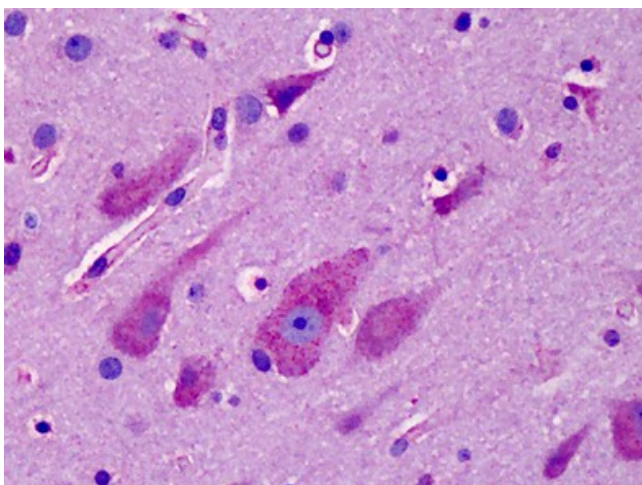
**Synonyms:** CXC-R7, CXCR-7, CMKOR1, GPR-159, RDC1

**Protein Families:** Druggable Genome, GPCR, Transmembrane

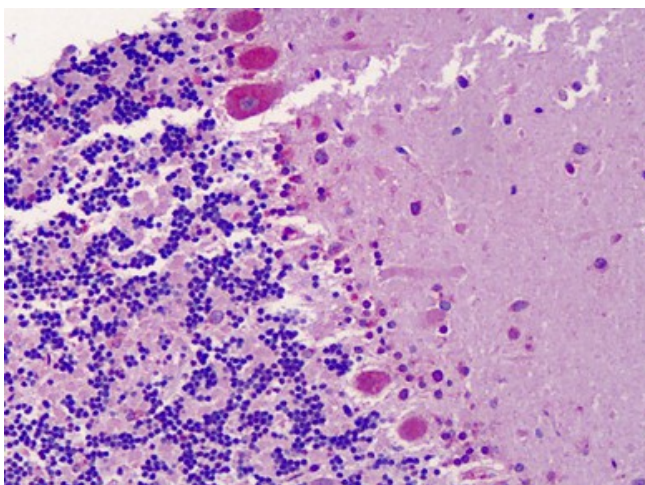
**Product images:**



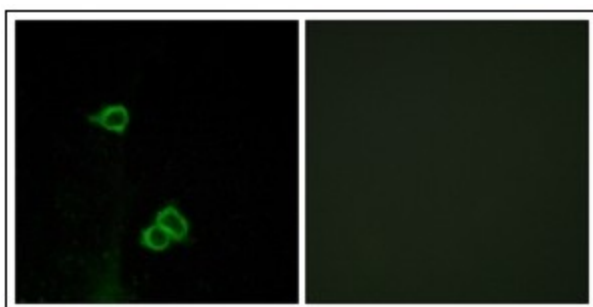
Western blot analysis of extracts from COS7 cells, using CXCR7 Antibody. The lane on the right is treated with the synthesized peptide.



Human Brain, Cortex: Formalin-Fixed, Paraffin-Embedded (FFPE)



Human Brain, Cerebellum: Formalin-Fixed, Paraffin-Embedded (FFPE)



Immunofluorescence analysis of COS7 cells, using CXCR7 Antibody. The picture on the right is treated with the synthesized peptide.