

Product datasheet for **AP23644PU-N**

ACTN3 (N-term) Rabbit Polyclonal Antibody

Product data:

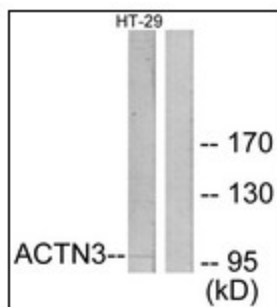
Product Type:	Primary Antibodies
Applications:	ELISA, IHC, WB
Recommended Dilution:	ELISA: 1/20000. Immunohistochemistry on Paraffin Sections: 1/100. Western Blot: 1/500 - 1/1000.
Reactivity:	Human, Mouse, Rat
Host:	Rabbit
Isotype:	IgG
Clonality:	Polyclonal
Immunogen:	ACTN3 antibody was raised against synthetic peptide - KLH conjugated
Specificity:	This antibody reacts to the N-term of Alpha-actinin 3, Skeletal Muscle Isoform (ACTN3).
Formulation:	PBS (without Mg ²⁺ , Ca ²⁺), pH 7.4 containing 150 mM sodium chloride, 0.02% sodium azide as preservative and 50% glycerol as stabilizer State: Liquid purified Ig fraction
Concentration:	lot specific
Purification:	Immunoaffinity Chromatography
Conjugation:	Unconjugated
Storage:	Store the antibody at -20°C. Avoid repeated freezing and thawing.
Stability:	Shelf life: one year from despatch.
Gene Name:	actinin alpha 3 (gene/pseudogene)
Database Link:	Entrez Gene 11474 Mouse Entrez Gene 171009 Rat Entrez Gene 89 Human Q08043
Background:	Alpha-actinin is an actin-binding protein with multiple roles in different cell types. ACTN3 expression is limited to skeletal muscle. It is localized to the Z-disc and analogous dense bodies, where it helps to anchor the myofibrillar actin filaments.
Synonyms:	Alpha actinin skeletal muscle isoform 3



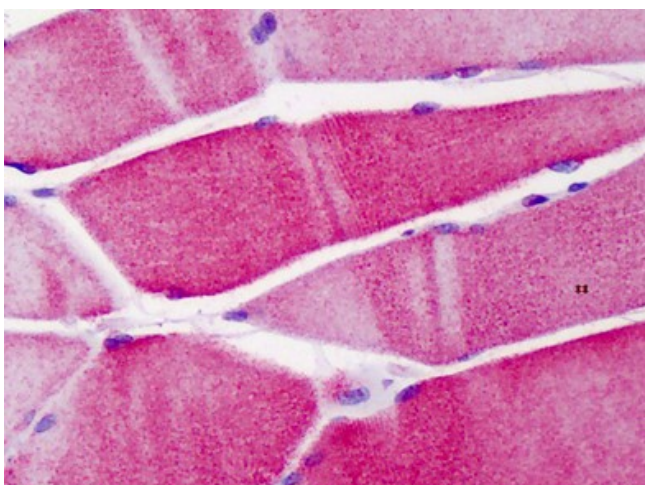
[View online »](#)

Protein Pathways:

Adherens junction, Arrhythmogenic right ventricular cardiomyopathy (ARVC), Focal adhesion, Leukocyte transendothelial migration, Regulation of actin cytoskeleton, Systemic lupus erythematosus, Tight junction

Product images:

Western blot analysis of extracts from HT-29 cells, using ACTN3 Antibody. The lane on the right is treated with the synthesized peptide.



Human Skeletal Muscle: Formalin-Fixed, Paraffin-Embedded (FFPE)