

Product datasheet for **AP23643PU-N**

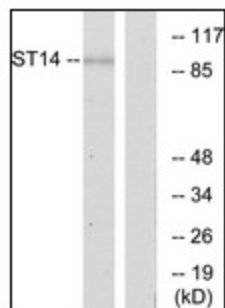
ST14 (N-term) Rabbit Polyclonal Antibody

Product data:

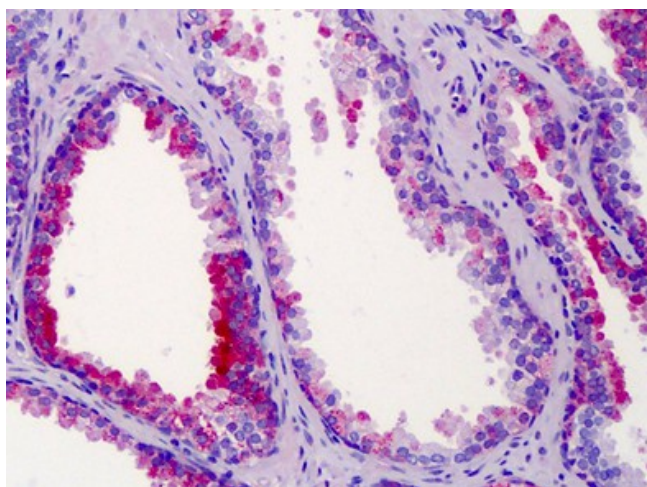
Product Type:	Primary Antibodies
Applications:	ELISA, IF, IHC, WB
Recommended Dilution:	ELISA: 1/10000. Immunofluorescence: 1/100 - 1/500. Immunohistochemistry on Paraffin Sections: 1/100. Western Blot: 1/500 - 1/1000.
Reactivity:	Human
Host:	Rabbit
Isotype:	IgG
Clonality:	Polyclonal
Immunogen:	ST14 antibody was raised against synthetic peptide - KLH conjugated
Specificity:	This antibody reacts to the N-term of Suppression Of Tumorigenicity 14 (colon Carcinoma, Matriptase, Epithin) (ST14).
Formulation:	PBS (without Mg ²⁺ , Ca ²⁺), pH 7.4 containing 150 mM sodium chloride, 0.02% sodium azide as preservative and 50% glycerol as stabilizer State: Purified State: Liquid purified Ig fraction
Concentration:	lot specific
Purification:	Immunoaffinity Chromatography
Conjugation:	Unconjugated
Storage:	Store the antibody at -20°C. Avoid repeated freezing and thawing.
Stability:	Shelf life: one year from despatch.
Gene Name:	suppression of tumorigenicity 14
Database Link:	Entrez Gene 6768 Human Q9Y5Y6
Synonyms:	PRSS14, SNC19, TADG15, T-SP1, Prostamin, Serine protease 14, Serine protease TADG-15
Protein Families:	Druggable Genome, Protease, Transmembrane



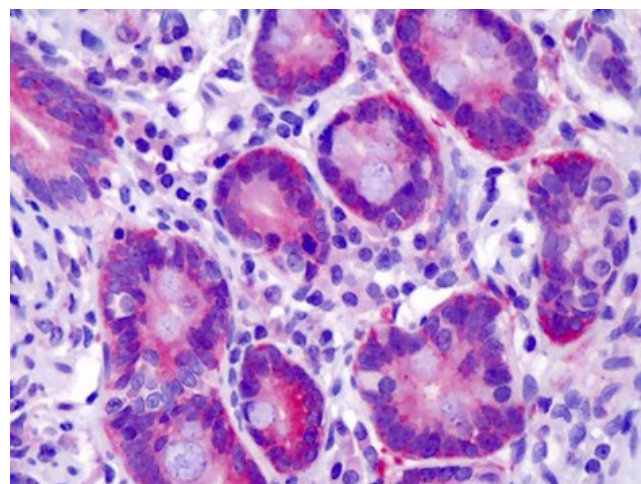
[View online »](#)

Product images:


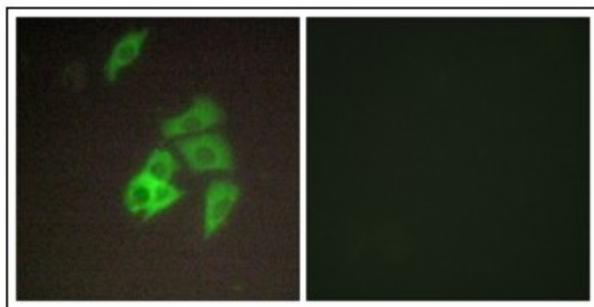
Western blot analysis of extracts from A549 cells, using ST14 Antibody. The lane on the right is treated with the synthesized peptide.



Human Prostate: Formalin-Fixed, Paraffin-Embedded (FFPE)



Human Small Intestine: Formalin-Fixed, Paraffin-Embedded (FFPE)



Immunofluorescence analysis of A549 cells, using ST14 Antibody. The picture on the right is treated with the synthesized peptide.