

Product datasheet for **AP23642PU-N**

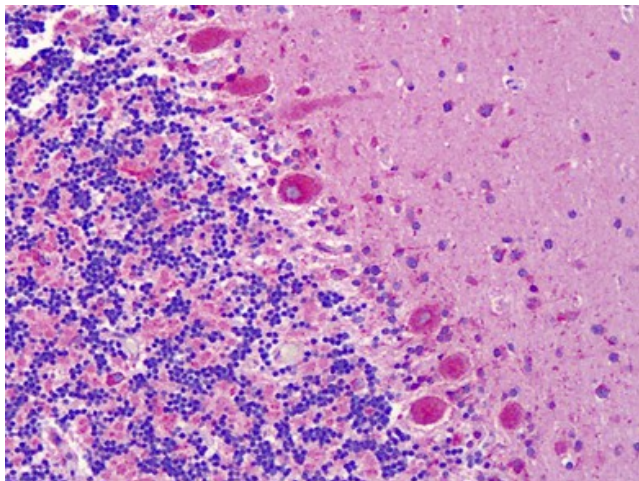
Eph receptor A6 (EPHA6) (C-term) Rabbit Polyclonal Antibody

Product data:

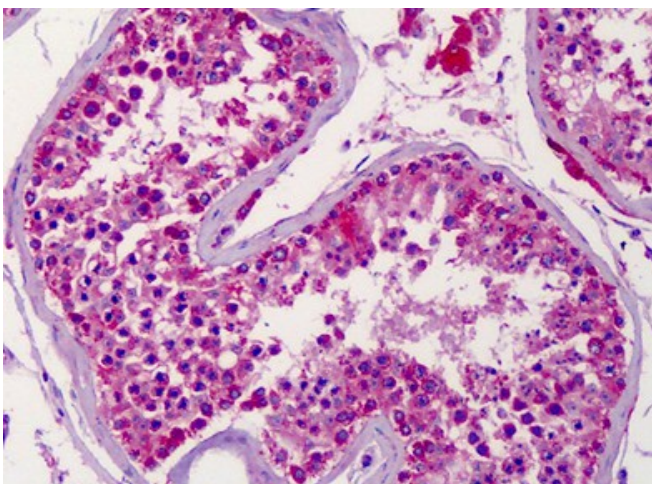
Product Type:	Primary Antibodies
Applications:	ELISA, IF, IHC
Recommended Dilution:	ELISA: 1/20000. Immunofluorescence: 1/100 - 1/500. Immunohistochemistry on Paraffin Sections: 1/100.
Reactivity:	Human, Mouse, Rat
Host:	Rabbit
Isotype:	IgG
Clonality:	Polyclonal
Immunogen:	EPHA6 antibody was raised against synthetic peptide - KLH conjugated
Specificity:	EPHA6 Antibody detects endogenous levels of total EPHA6 protein.
Formulation:	PBS (without Mg ²⁺ , Ca ²⁺), pH 7.4 containing 150 mM sodium chloride, 0.02% sodium azide as preservative and 50% glycerol as stabilizer State: Liquid purified Ig fraction
Concentration:	lot specific
Purification:	Immunoaffinity Chromatography
Conjugation:	Unconjugated
Storage:	Store the antibody at -20°C. Avoid repeated freezing and thawing.
Stability:	Shelf life: one year from despatch.
Gene Name:	EPH receptor A6
Database Link:	Entrez Gene 13840 Mouse Entrez Gene 29202 Rat Entrez Gene 285220 Human Q9UF33
Synonyms:	Ephrin type-A receptor 6, EPH homology kinase 2, Ehk-2, Ehk2
Protein Families:	Druggable Genome, Protein Kinase, Transmembrane
Protein Pathways:	Axon guidance



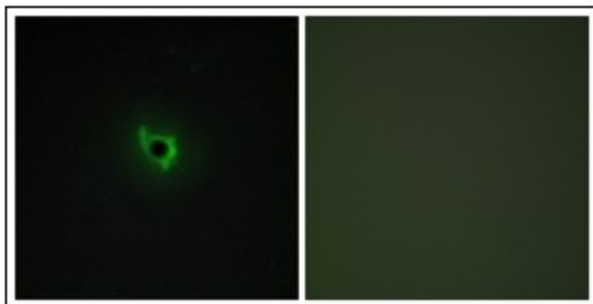
[View online »](#)

Product images:

Human Brain, Cerebellum: Formalin-Fixed, Paraffin-Embedded (FFPE)



Human Testis: Formalin-Fixed, Paraffin-Embedded (FFPE)



Immunofluorescence analysis of COS7 cells, using EPHA6 Antibody. The picture on the right is treated with the synthesized peptide.